

MARYANN THOMPSON ARCHITECTS

741 Mount Auburn St Watertown MA 02472 | t: 617 744 5187 f: 617 491 3844

FEBRUARY 7, 2019 6pm @ VHPL**Attendees/Invitees**

Name	✓	Contact	Capacity
Maryann Thompson (MT)	✓	maryann@maryannthompson.com	Principal Architect
Doug Jack (DJ)	✓	douglas@maryannthompson.com	Project Architect
Amy Ryan	✓	amyryan@clamsnet.org	Library Director (Ex-officio)
Ian Aitchison	✓	iaitchison@comcast.net	Library Trustee
Andrew Flake	✓	aafwc@aol.com	Committee Vice-Chair
Hal Garneau	✓	harvey@indianhillpress.com	Committee Secretary
Johanna Kobran		jhkobran@yahoo.com	liaison to Friends of the Lib.
Paul Munafo		Pauliemv@comcast.net	Tisbury Planning Board, Committee Chair
Jim Norton	✓	jhknorton@capecod.net	liaison to Capital Campaign Committee
Sandy Pratt	✓	sandypratt1247@comcast.net	Chair of Library Trustees (Ex-officio)
Ben Robinson	✓	phraluang@yahoo.com	Tisbury Planning Board

Discussion:**A. CHARACTER STUDY**

- Please see attached pages for all individual images with sticky comments transcribed onto them.

B. WISHLIST DISCUSSION**1) *What makes the Vineyard Haven Public Library unique, and how could you imagine this translating architecturally?***

- The staff: knowledgeable, helpful, friendly
- Safe Space
 - Safe space for children
 - VHPL is like a daycare for young children where staff can oversee them safely
 - "One of grandchildren felt so fabulous because she could be left on her own, and it's a safe place. Then I came back in an hour, just to check on her [...] She felt very independent"
 - "Friendliness" (staff, kids, community)
- Architecture
 - Modesty in design
 - "The reaction about the columns was because it was formal and didn't fit in with the neighborhood [...] The library feels like it's a part of this neighborhood, inside and out."
 - Likes pergola/trellis as unobtrusive options

These notes will become part of the project record five days from the date of transmittal. Please notify MTA of any errors or omissions.

February 7, 2019

MARYANN THOMPSON ARCHITECTS

741 Mount Auburn St Watertown MA 02472 | t: 617 744 5187 f: 617 491 3844

- “It would be so wonderful if we could make our own impression, so 100 years from now, people are saying ‘that was the building from 100 years ago, this is what happened in that time’ [...] we restore old buildings without recognizing that we can make an impact. We have a culture to share as well.”
 - Suggest looking at West Tisbury Public Library for exterior form precedent on MV
 - Landscape
 - Likes New England landscape
 - Likes brick and stone landscape
 - Would like to preserve legacy of Shakespeare garden
 - “Unobtrusive in the landscape”
 - “Bring the outside to the inside and vice versa”
 - Would like a low maintenance landscape (xeriscaping)
 - Social hub
 - Likes how VHPL is a place for social activity
 - Adult programs are booming and need better accommodations
 - Convenient space – easily accessible from neighborhood. “It’s 2 blocks from my house.”
 - Renovated space could have display of community art
- 2) *Describe the general feeling you want in the library addition: e.g. light and airy, cozy nest, etc.*
- Don’t shy away from being “daring” while respecting existing architecture
 - “Daring” Architecture is OK if it is in back -- not on street
 - “Unobtrusive” renovation
 - Interior/Exterior focus: Connect inside and outside
 - Adult programming: “Think of what a program room is used for, especially for adults. People sitting in there for an hour or two or more. You want a warm room, a light filled room, an airy room, you don’t want a low ceiling like [the one we’re in now], you want to be able to use the air conditioner without it making noise and drowning out the speaker”
 - Light
 - Like a design that plays with shadows
 - Like precedent with vertical slats
 - Bring outside/overhead daylight inside
 - Organic ceiling (reflects light)
 - High ceilings, warmth, light
 - Would like southern exposure windows, but with blackout curtains that can move across (to hold events, presentations, LED screen/projector all times of day)
 - Recommend against just a white box: make contextually fitting
 - Likes “light and airy”, but are large windows too modern?
- 3) *What functions/uses would you most like to see added to the library with this addition?*
- Event/presentation space
 - Terraced seating
 - Cushioned seating (for rear and back comfort). People don’t like existing hard seating
 - Prefer tables and chairs over couches for the event space
 - In response to precedent images with lots of couches and space: prefer the event to be more program-oriented, less of a lounge/hangout space
 - Suggest paying closest attention to presentation/program, A/V needs

These notes will become part of the project record five days from the date of transmittal. Please notify MTA of any errors or omissions.

February 7, 2019

MARYANN THOMPSON ARCHITECTS

741 Mount Auburn St Watertown MA 02472 | t: 617 744 5187 f: 617 491 3844

- Height of screen/display – consider sightlines, visibility for people of all heights. Would like screen height to be adjustable.
- Suggest large doors/windows (with screens) that open to garden
- Large access doors for art, instruments, etc.
- Remember story of grand piano gift – “If you have a large space, you will be gifted a grand piano.” Suggest planning for door opening and space to accommodate just in case.
- Would like Bluetooth capability / wifi for hearing assistance, for presentation hall
- Design should use acoustic amplification technology but should also use spatial/material strategies that prioritize acoustics for presentation space
- Would like technology to not interfere with presentation/audience experience
- Suggest looking at Edgartown Public Library for IT/Acoustics precedents on the Vineyard
- Adaptability (especially for event/presentation space)
 - Likes brightly colored foam block precedent image (flexible)
 - Suggests ability to blackout space. Can be light, airy, but also totally black for a movie screening or presentation during the day.
 - Suggestion: Height of presenter can be accommodated by an removable platform
 - Likes movable/adaptable walls
 - Would like flexible space/furniture/chairs
- Possibility of adding a second floor
 - Elevated views
 - Roof deck possibly allows for a view of the water
 - Rooftop garden
- Basement possibility
 - Could house smaller meeting rooms
- Kitchen
 - Food/demonstration kitchen
 - small kitchen with art on the walls
- Storage
 - Chair/table/event storage
- Ravine renovation
 - Existing “deep pit” is wasted space ... possibility to upgrade the ravine?
 - If ravine is modified, prefer to preserve natural light in basement
- Flooring
 - Flooring should consider durability and maintenance
 - Carpet might be difficult to maintain
 - Cushioned chairs could be a part of this strategy – muffle noise
- Sustainability/energy conservation
 - Consider an organic garden - edible
 - Recommend green design to be employed for systems/materials: solar energy, on-site energy generation, composting toilets
 - Opportunity for cost savings from green design
- Parking
 - Consider adding parking spots with renovation for large gathers of people in new presentation space
 - “We’ve had quite a few events with 80 to 100 people upstairs, which is a lot of work. It’s certainly a little walk for people, but we’ve had those events a couple times a year here in this library”

These notes will become part of the project record five days from the date of transmittal. Please notify MTA of any errors or omissions.

February 7, 2019

- Existing septic
 - MTA to confirm that building could be sited at the proposed back location without interfering with existing septic system
- 4) *What should we consider when designing the entry and circulation sequences to/from the new space?*
 - Prefer main floor of renovation to be for the public
 - Acoustics
 - Consider acoustic (interior vs exterior) effect on neighbors – during building construction and building use
 - Think about neighbors with regards to noise and light pollution
 - Bathrooms
 - Need discrete access for after-hours event when main library is closed.
 - Prefer unisex bathroom(s)
 - Suggest more restrooms for women (and maybe children) when determining appropriate fixture count
 - Consider composting toilets for sustainability. Some in audience reacted negatively to this.
 - Entry
 - Preferably not too crowded at entrance
 - Would like vestibule space
 - Should allow for separate entry from main library
 - Prefer entering/exiting traffic to be away from presenter so as not to interrupt
- 5) *Are there any accessibility issues you would like to see addressed with this addition?*
 - Renovation to be fully ADA accessible without aid of staff
 - Elevator might be needed if a second floor is added
 - Ease of circulation all the way from handicap parking to event space
- 6) *What problems do you have with the current event/program space?*
 - Would benefit from dimmable lighting
 - “Too small, too low, too cramped, no natural light, no dimming”
 - Current space has low ceilings, small square footage
 - Existing sound isolation/insulation issues have come up with neighbors
 - Would benefit from improved air circulation and more fresh air
- 7) *How could we make the overall library more purposeful and effective?*
 - “By putting on an addition”
 - “more space for women”
 - “quiet silence”
 - “Libraries are evolving now. Usefulness and purpose. Look to the future, what will they become?”
 - “When we first opened the library in 2000, programming was not something that was done. Our very first program was 2001, on Afghanistan, right after 9/11” and now programming is a major part of what the library does. The library’s role changes very rapidly over time.
 - “The community will be turning to the library more and more as a place to come and meet other people for activities that they want to do, whether it’s quilting or yoga or a music

program or a lecture. That's not going to stop, it's going to grow. The program room is an attempt to address that in a large enough space to accommodate that."

- Would like a balance: usable space and ceiling height
- Look at how to repurpose existing program space
- Include office space with program space
- Health
 - Strongly recommend mold prevention strategies in renovation for long-term health of staff and visitors
 - Recommend use of low VOC products
- See project as an opportunity to make VHPL more sustainable

Attachments:

- *Meeting Agenda*
- *Wish List*
- *Character Study images with sticky notes transcribed*

End of Meeting Minutes for 2.7.2019

**VINEYARD HAVEN PUBLIC LIBRARY, Vineyard Haven, MA
PUBLIC MEETING**

Location: VHPL, Vineyard Haven MA

Date & Time: 2.7.19, 6-8PM

AGENDA

6:00-6:15 – Welcome

Allow guests time to arrive and mingle while enjoying snacks.

6:15-6:30 – Introductions

Library BDC Committee to introduce the project generally and MTA as the Architect. MTA to introduce the Character Study and Wishlist process and give instructions on feedback format.

6:30-7:00 – Character Study

Participants view images on easels and write comments on post-it notes.

7:00-8:00 – Group Brainstorm

Entire group to come together and brainstorm with notes taken on large sticky pad.

VINEYARD HAVEN PUBLIC LIBRARY, Vineyard Haven, MA
WISH LIST/PROGRAMMING QUESTIONNAIRE

Date: _____

Name of participant: _____

Feel free to address any or all questions and add extra lines or sheets to clearly outline your wish list for the Vineyard Haven Public Library!

- 1) What makes the Vineyard Haven Public Library unique, and how could you imagine this translating architecturally?

- 2) Describe the general feeling you want in the library addition: e.g. light and airy, cozy nest, etc.

- 3) What functions/uses would you most like to see added to the library with this addition?

- 4) What should we consider when designing the entry and circulation sequences to/from the new space?

- 5) Are there any accessibility issues you would like to see addressed with this addition?

- 6) What problems do you have with the current event/program space?

- 7) How could we make the overall library more purposeful and effective?

Interior-Form_01

- Like a lot
- Looks like the Tisbury School Library
- Like the perimeter seating and reading nooks. Makes it multi-purpose
- The idea of perimeter seating is good use for when room is not being used for large groups or meetings
- Good seating idea for laptop uses
- Nice window seating nooks (and a 2nd "like" for this comment)



Interior-Form_02

- Too formal residential
- Contrast plaster/wood



Interior-Form_03

- Yes
- Feels colder
- Love the seating



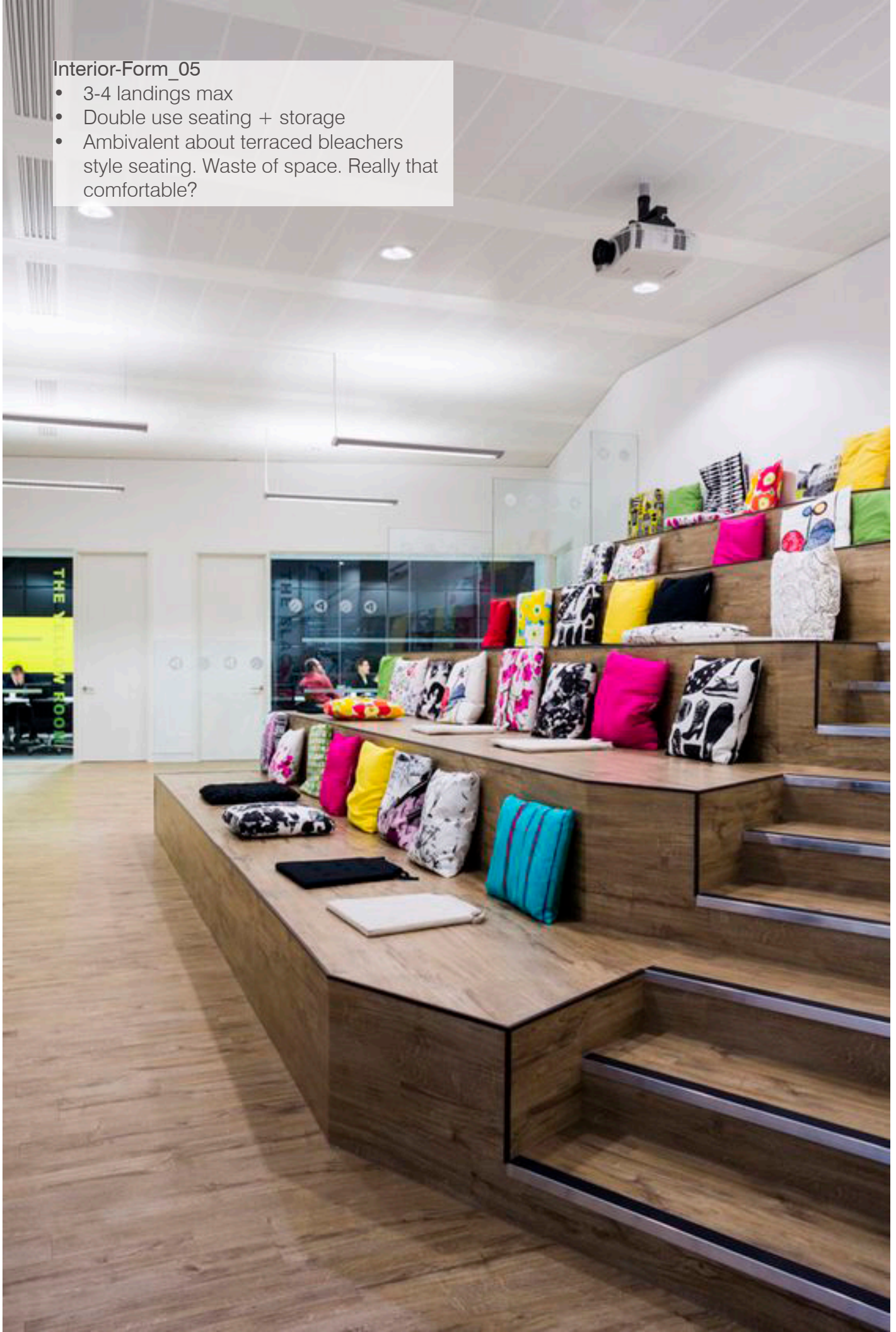
Interior-Form_04

- Too many things
- Like the higher ceiling
- A living room



Interior-Form_05

- 3-4 landings max
- Double use seating + storage
- Ambivalent about terraced bleachers style seating. Waste of space. Really that comfortable?



Interior-Form_06

- Too dark
- I like the live plants. And is this chalk board?! That'd be great!
- I like the dark colors
- Grate! Grate! Grate!
- I like the couch and the plants + interior landscape
- Too dark
- Good seating but dark



Interior-Form_07

- Too busy
- Window planters are a good idea, brings some fresh green plant life indoors (especially in winter)
- Need upper space for purpose
- Too elevated



Interior-Form_08

- Too busy and congested
- Nice feel: light, furniture & shelves
- Like curtains for presentation/powerpoint
- Too dark



Interior-Form_09

- Yes to the vaulted skylight
- + skylight (x2)
- Armory shelves = lots of traffic?
- No shelves too high, have to ask for help!
- No shelves in program room
- Space must be able to accomodate tables and theatre chairs



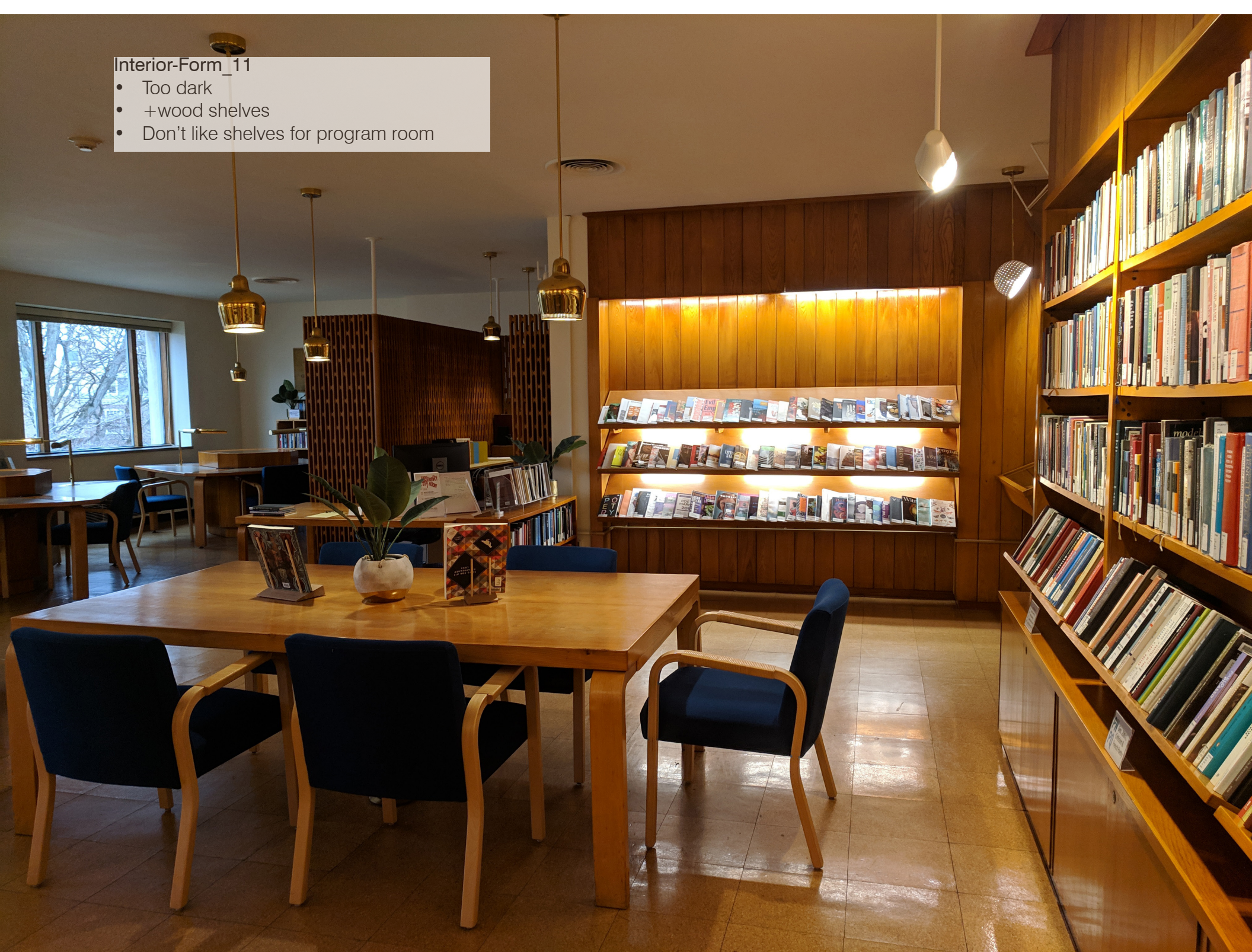
Interior-Form_10

- I love everything about this
- Very nice arrangement, light, seating, add a rug, storage underneath
- Yes, please (x2)
- Love the connection between inside + outside
- Not very comfortable seating
- I like cushy seats with a view



Interior-Form_11

- Too dark
- +wood shelves
- Don't like shelves for program room



Interior-Form_12

- Use of bouncing the light. Indirect transoms
- Like light (x2)
- Like natural light from above



Interior-Form_13

- Bright reading areas



Interior-Form_14

- Nice colors
- Too cluttered
- No! Too much stuff! Need area for art!
- Good lighting and shelves
- No shelves in program room. Need open space



Interior-Form_15

- Nice lighting. Like archway seating area
- Interesting furniture for much space
- More open to furniture
- Very interesting + graceful + useful design



Interior-Form_16

- New look feel
- New lighter furniture arrangement
- Like the open look to outside
- Like
- Cosy corner, like West Tisbury, where they keep latest newspaper



Interior_Form_17

- Good space and shelves
- More natural light
- + Wood shelves texture
- Like lighting on bookcase



Interior_Form_18

- Like the natural feel
- + wood ceiling
- +high ceiling
- Inviting but too vertical
- Like
- Love the height and natural wood (x2)
- A wooden setting



Interior_Form_19

- Too blank
- Beautiful wood-washed space
- I like the lightness of the wood. I love the organicness of the materials
- Good light - colored, natural looking wood paneled walls
- - Pendant lamp will just collect dust
- Like the wood and light



Interior_Form_20

- Cool wall thing
- Would prefer natural wood or greenish color
- No thanks
- No (x 2)
- No, too busy
- Colors are distracting
- Like the color
- Dislike colors, like multiusability



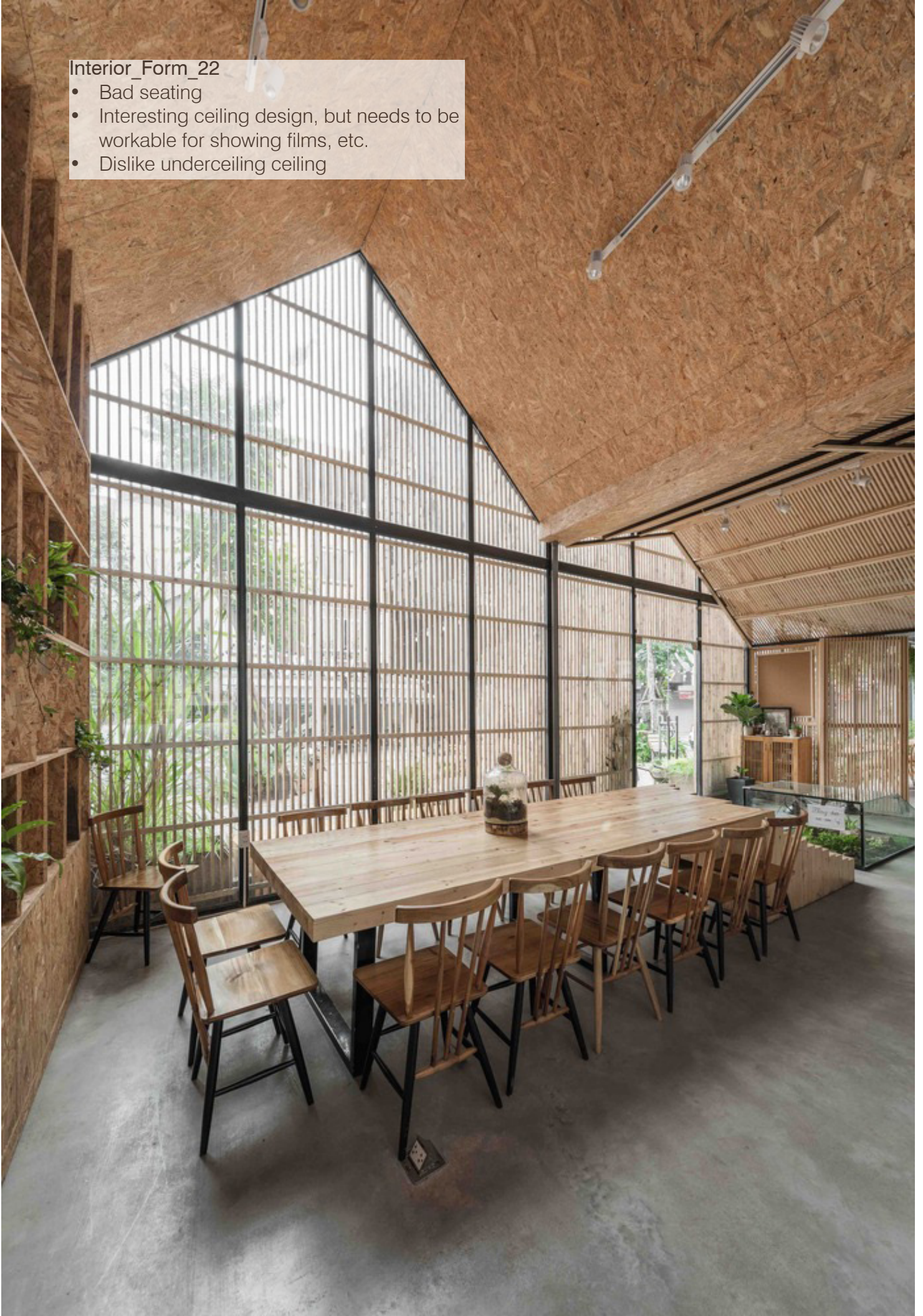
Interior_Form_21

- Too residential + formal
- Don't need huge chairs
- +high ceiling
- Like vaulted ceiling
- Natural wood preferred
- Traditional, simple, American vibe



Interior_Form_22

- Bad seating
- Interesting ceiling design, but needs to be workable for showing films, etc.
- Dislike underceiling ceiling



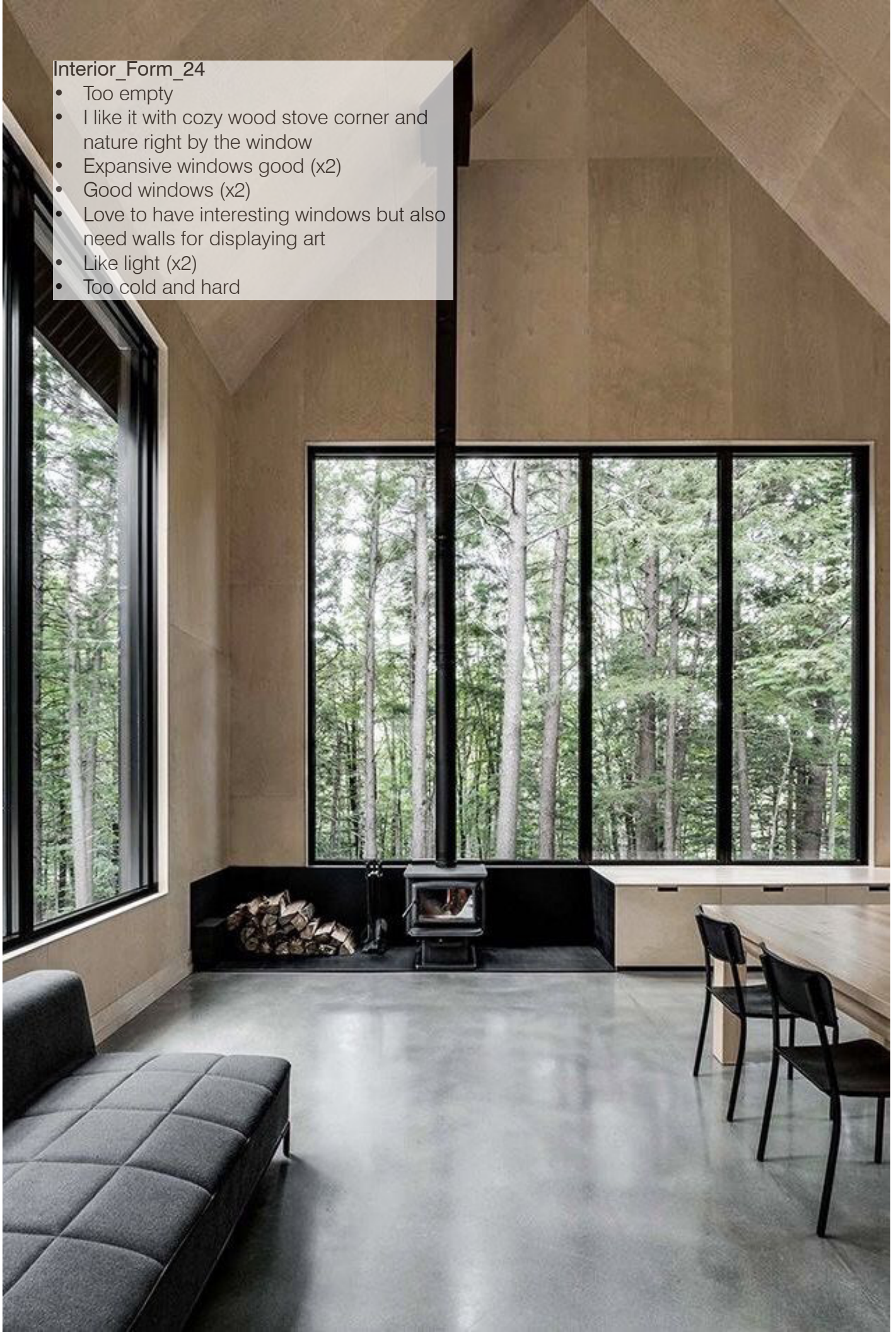
Interior_Form_23

- Like tone of wood and palette
- Nice to open outside
- Like the feel of outside views
- Like natural materials and bringing nature inside. Like the light!



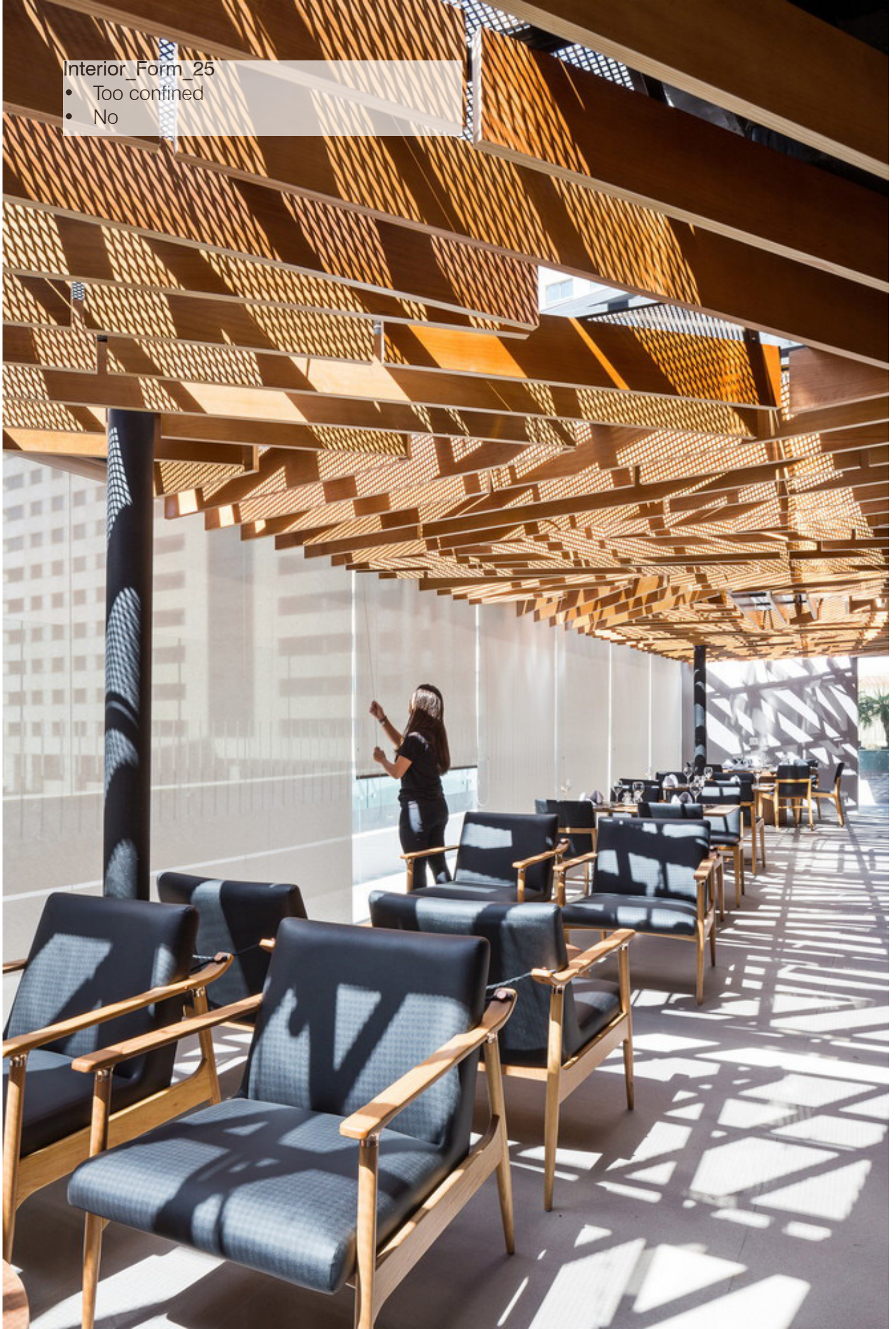
Interior_Form_24

- Too empty
- I like it with cozy wood stove corner and nature right by the window
- Expansive windows good (x2)
- Good windows (x2)
- Love to have interesting windows but also need walls for displaying art
- Like light (x2)
- Too cold and hard



Interior_Form_25

- Too confined
- No



Interior_Form_26

- Too much space, too little fenestration



Interior_Form_27

- Blah!
- Like the circles



Interior_Form_28

- Dislike, no view outside
- These chairs not for library here



Interior_Form_29

- - Dark



Interior_Form_30

- + If one story like the idea of skylights
- Interesting ceiling design, a way to let in light and still have useable walk
- How then to darken the room?



Interior_Form_31

- +High ceiling
- +Structure
- Too busy
- Airy and inspiring
- Love the light wood beam ceilings
- unusual light coming from the ridge line
- good use of above dividing the room



Interior_Form_32

- Too enclosed
- No! Blah!):
- Too dark



Interior-Form_33

- Great use of natural lighting
- +Wood ceiling (x2)
- +Contrast
- Like organic feel and lighting
- Love the light
- +Organic look of the wood
- +Texture of the wood ceiling
- +Skylight
- A cap? Not on town farm, please



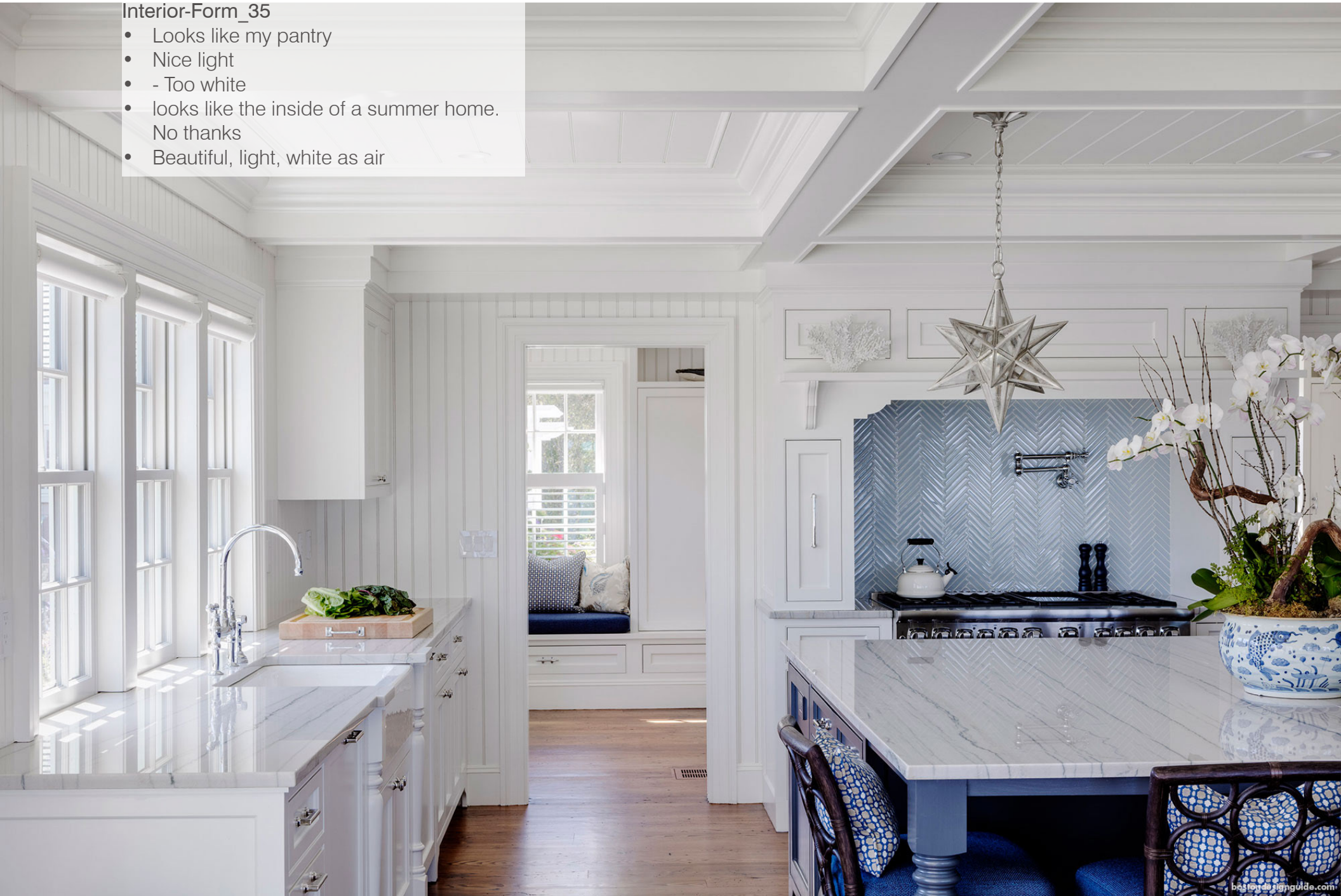
Interior-Form_34

- I don't like the boring seating
- Like lighting fixtures and textured ceiling
- Like access to outdoors
- Too many windows, no room for pictures or books
- + Outside coming into the inside of room
- + Textured wood ceiling
- + simple, usable space



Interior-Form_35

- Looks like my pantry
- Nice light
- - Too white
- looks like the inside of a summer home.
No thanks
- Beautiful, light, white as air



Interior-Form_36

- + Odd windows
- Like the unexpected shape of window
- +Light painted wood walls



Interior-Form_37

- Love natural light
- Like warmth of wood
- +light
- +wood
- Like window symmetry
- Yes
- +Natural wood



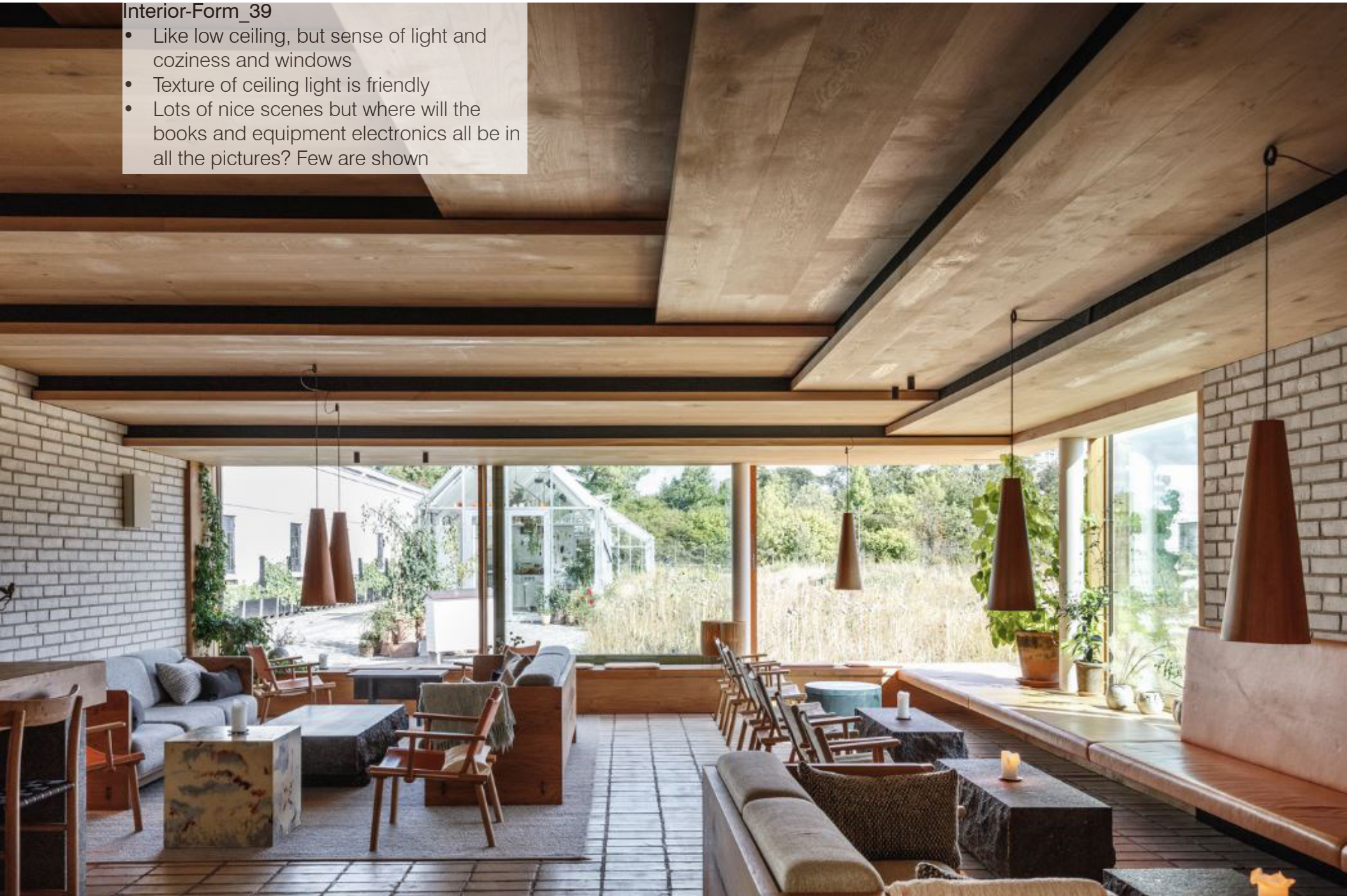
Interior-Form_38

- Too modern and bad light
- Like
- No thank you
- Maybe but too small
- Relaxing environment. Contemporary change from a traditional building



Interior-Form_39

- Like low ceiling, but sense of light and coziness and windows
- Texture of ceiling light is friendly
- Lots of nice scenes but where will the books and equipment electronics all be in all the pictures? Few are shown



Interior-Form_40

- Good plants
- No to lights
- Love columns and reflected light
- Uneven surface = bad
- Like everything except the lighting
- Like the outdoors coming into the space, texture of wood ceiling, and organic floor
- Nice warm feeling created by use of natural wood
- Nice to bring outside inside if possible
- Love lots of plants inside too



Interior-Form_41

- +Light
- Good use of indirect bouncing light
- A little too sparse
- Light makes a beautiful feel of the space for the project



Interior-Form_42

- No to ceiling
- Like the storage (x2)
- Like the big window (x2)
- +Light
- +Flexible space
- +LED TV
- +Moveable tables
- -Need to darken for protection



Interior-Form_43

- + Bright, well-lit room (x2)
- - Ceiling too low (x2)
- Great, beautiful view
- Ceiling is dull
- Like the layout and the light



Interior-Form_44

- +Ceiling and natural light
- Good views to outside
- +Many windows open to green
- Like
- Take advantage of light but aim for energy efficiency



Interior-Form_45

- No
- Yes
- Like the light coming into the room



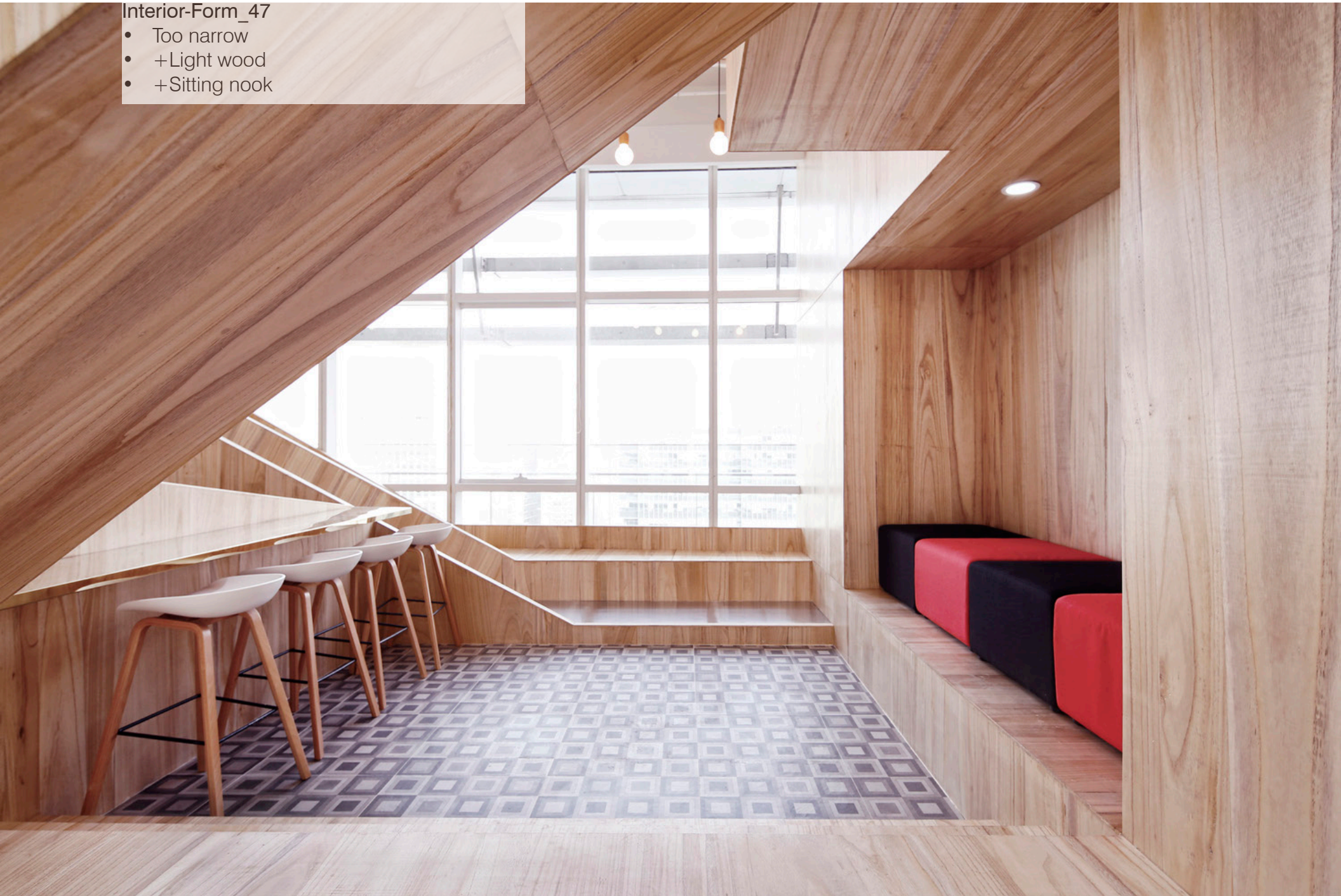
Interior-Form_46

- Too busy
- Too Starbucks
- Like the Starbucks ceiling



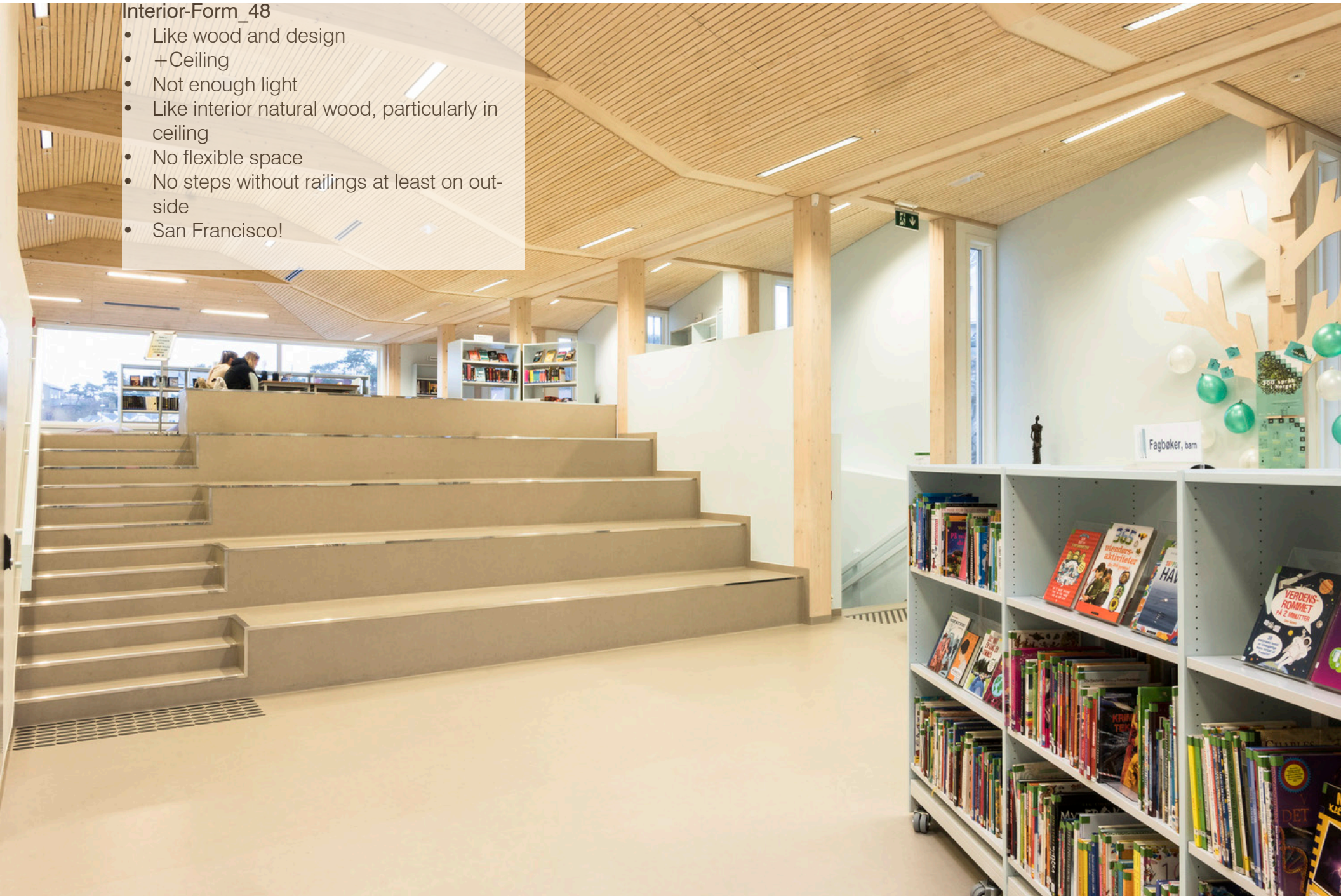
Interior-Form_47

- Too narrow
- +Light wood
- +Sitting nook



Interior-Form_48

- Like wood and design
- +Ceiling
- Not enough light
- Like interior natural wood, particularly in ceiling
- No flexible space
- No steps without railings at least on outside
- San Francisco!



Exterior-Form_01

- Clean transition. Nice!



Exterior-Form_02

- A separate entrance for program when library is closed



Exterior-Form_03

- No comments



Exterior-Form_04

- + Large glazing
- + Concept of all glass at one end interesting
- + Traditional form with dramatic window



Exterior-Form_05

- Good outside reading space



Exterior-Form_06

- Sublime
- The vertical lines read to the sky and are clean and directional
- Curious about the use of this siding + if it can be applied to a door/doors which can be used to deflect evening light and be less obtrusive to neighbors + public at night



Exterior-Form_07

- Most fitting my current look of VH library
- Very inviting entrance
- +Need to fit into the neighborhood and with existing building but be pleasantly new and warm +welcoming
- This would tie into the current existing design of the building



Exterior-Form_08

- Where are the cows?
- Not fit in area



Exterior-Form_09

- Too residential



Exterior-Form_10

- Too cold and stark



Exterior-Form_11

- Too impersonal



Exterior-Form_12

- Modern “cape” style is nice
- +simple clean form



Exterior-Form_13

- No comment



Exterior-Form_14

- No comment



Exterior-Form_15

- No thanks!
- Too traditional
- Like the graceful element over door



Exterior-Form_16

- +overall existing and seating



Exterior-Form_17

- + Similar look for area
- Like traditional entry facade with minimum planting in front



Exterior-Form_18

- +Openess and simplicity



Exterior-Form_19

- How about a covered deck 2nd floor to sit with coffee or iced tea + a good book or conversations
- Love the different materials
- Love the corner windows as light comes in from both sides



Exterior-Form_20

- No comment



Exterior-Form_21

- Too traditional for the current building
- Keep this New England style inside and out



Exterior-Form_22

- Too modern
- +Solar panels
- +Seems to have plenty of wall space with light also
- Solar panels? Draining roof to catch water for reuse? Good ideas. Make use of roofs



Exterior-Form_23

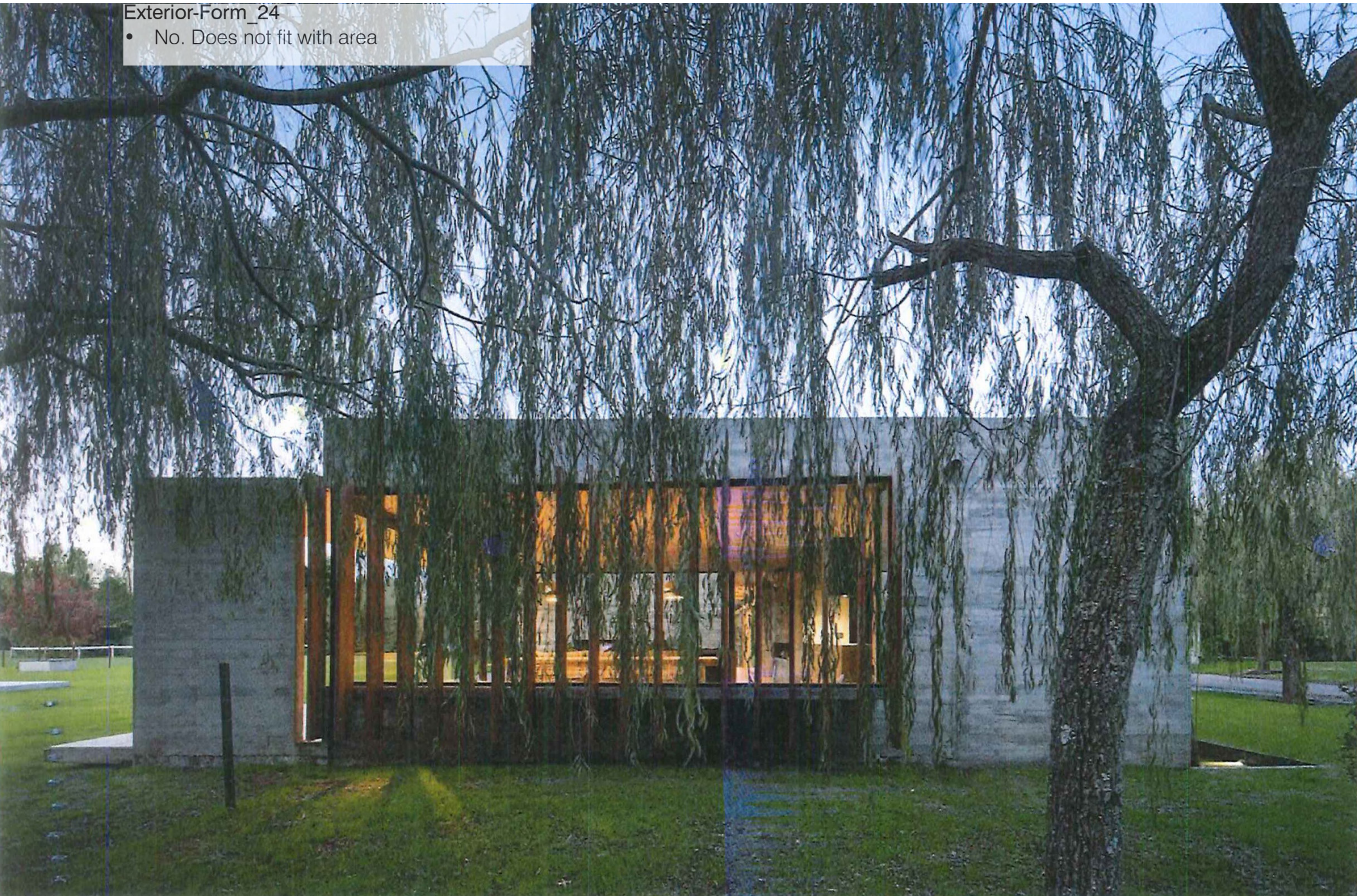
- Too stark, not for the vineyard



154463676

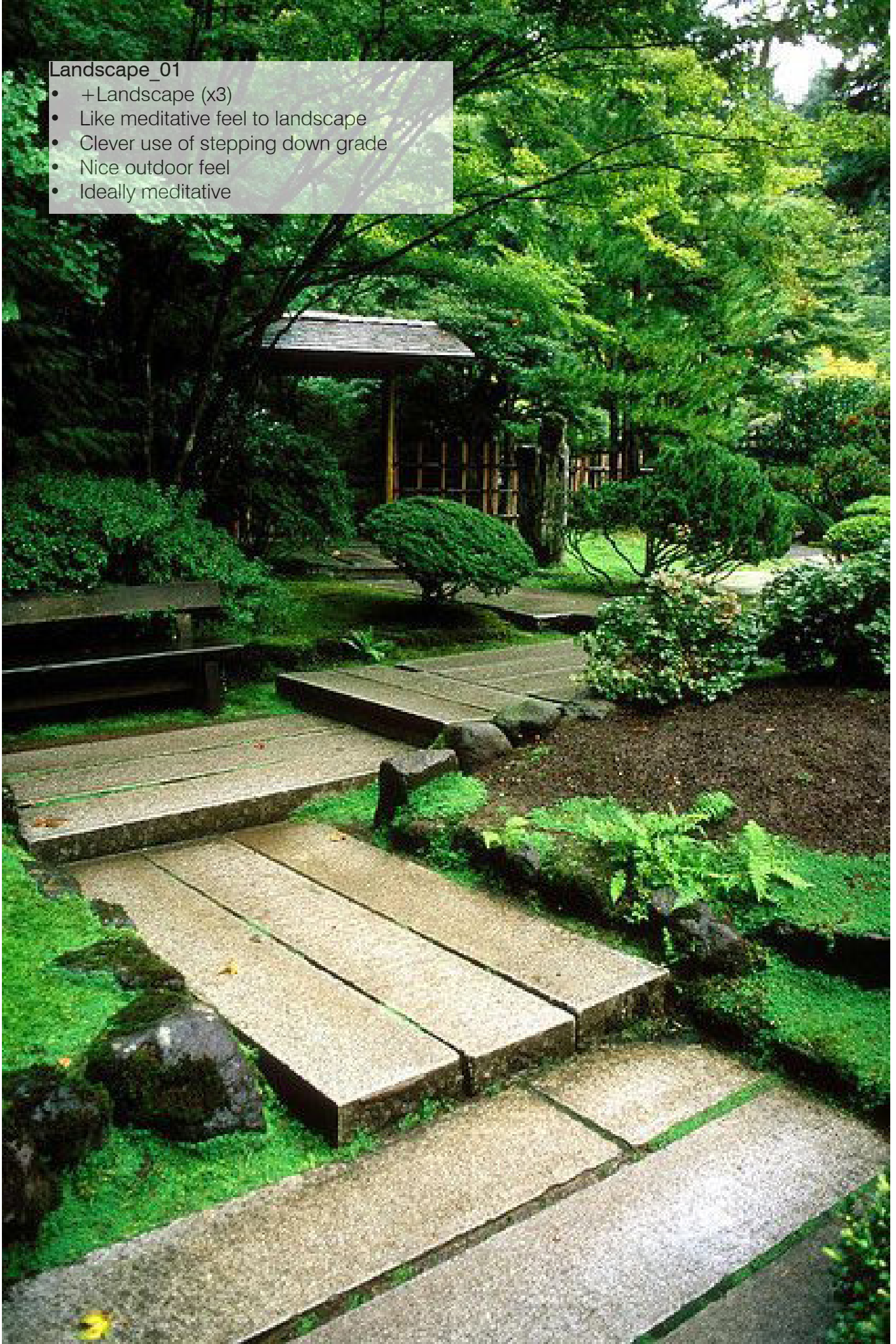
Exterior-Form_24

- No. Does not fit with area



Landscape_01

- +Landscape (x3)
- Like meditative feel to landscape
- Clever use of stepping down grade
- Nice outdoor feel
- Ideally meditative



Landscape_02

- Ideal for a horticultural school/museum
- -Maintenance



Landscape_03

- + Natural light
- Simple add on, good outside inside relationship
- Summer porch is nice



Landscape_04

- Good roofing
- Right outside look
- Fits with area
- + This would continue the present look
- Good landscaping, needs some seating
- I like garden with path
- + Table outdoors with shade



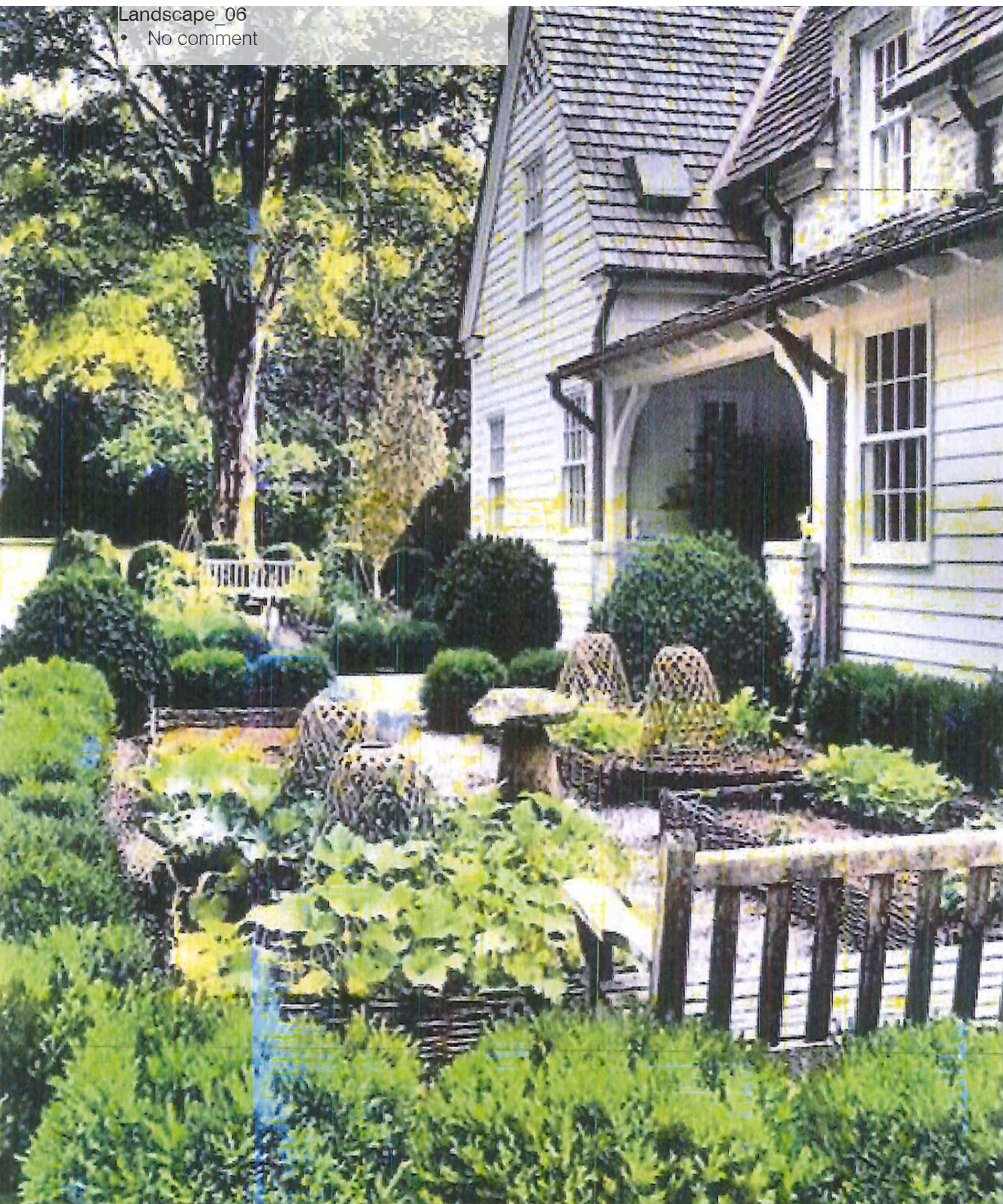
Landscape_05

- No comment



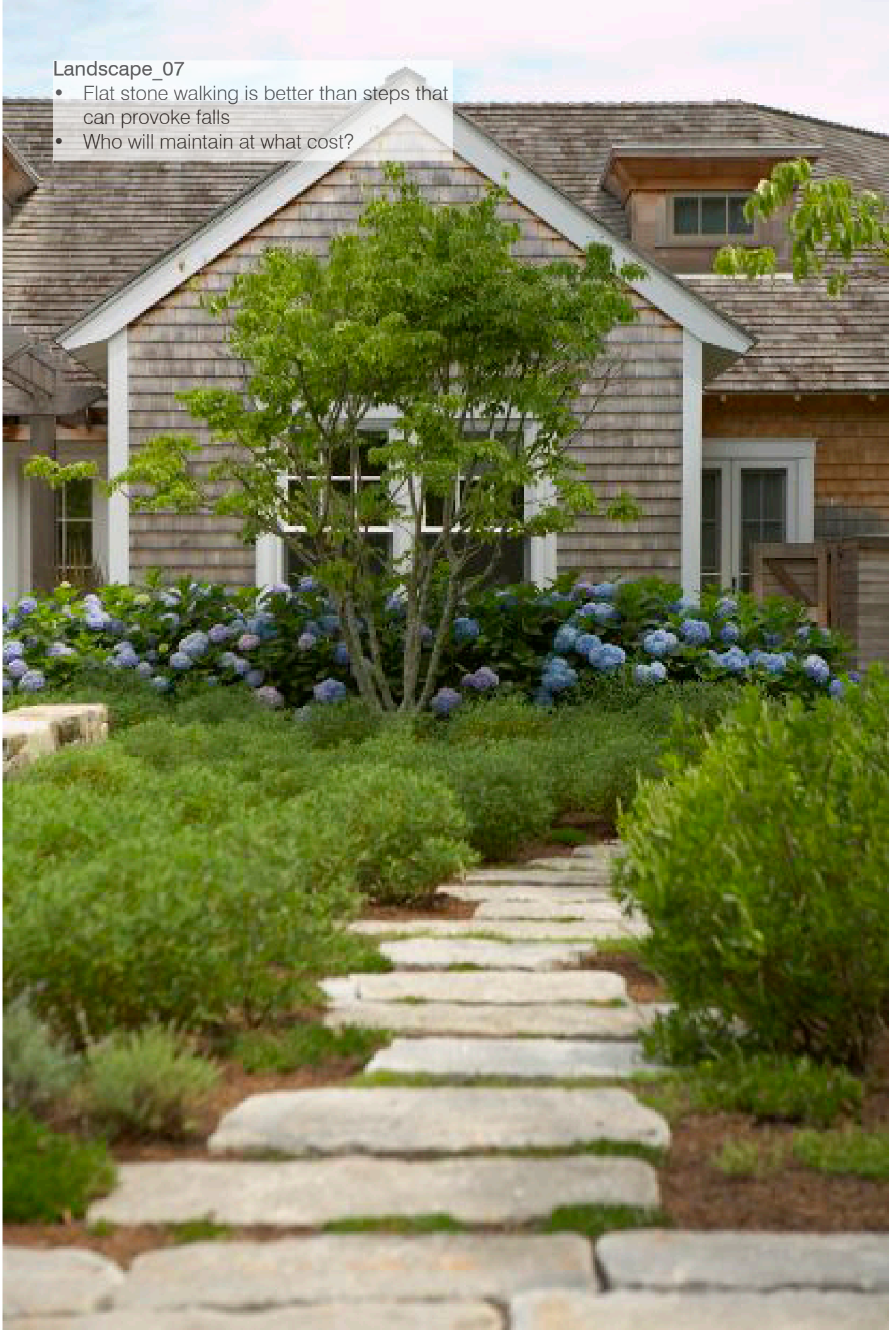
Landscape_06

- No comment



Landscape_07

- Flat stone walking is better than steps that can provoke falls
- Who will maintain at what cost?



Landscape_08

- Too much maintenance
- I like the green space



Landscape_09

- +Lush gardens



Landscape_10

- Clerestory windows are good
- I know this space and I love how the rain is harvested! Catching rain is practical and beautiful
- Good windows looking to garden
- Lots of light and windows. Close connection to the landscape



Landscape_11

- +Like open space - also to honor legacy left by Margaret Webster to share space in garden
- +Landscape
- Nice space, keep small
- Nice natural feel
- +Use of outdoor space
- +Seating outside
- +Need some access to landscape outside
- Too much space devoted to plants
- Simple access, no climbing unless there is railing access for the elderly
- +Simple greenery, easy care
- +Nice to have space you can sit outdoors in the warm



Landscape_12

- Like simplicity of space and limited plant material
- Yes
- Like outdoor seating space



Landscape_13

- Nice pathway



Landscape_14

- Need parked surface - library is small - so not too much difference in sides



Landscape_15

- Leave room for restful landscaping
- Too much fussy plant material



Landscape_16

- Like wall space and natural light
- - Not enough windows to let in light
- Goat please



Inside-Outside_01

- No thanks



Inside-Outside_02

- GLike
- Less is more
- A bit too modern (dull)



Inside-Outside_03

- Contrasting shadows give me a headache
- Great light dimension, outstanding!



Inside-Outside_04

- + Use of garden space
- No
- Too much comfort here
- Nice sheltered outdoor space



Inside-Outside_05

- No



Inside-Outside_06

- Yes
- Love big glass to let light in and let outside in
- Practical and pleasant, windows are inviting



Inside-Outside_07

- Grate!
- Great organic outdoor spaces, contemplative
- Old + new, outdoors + indoors
- Weather permitting, possible outdoor seating programs, especially for children
- No, want something more open, wooden look not apparent
- Attractive but too dark and too much congestion
- Like the organic look, materials used, and textures for the materials used



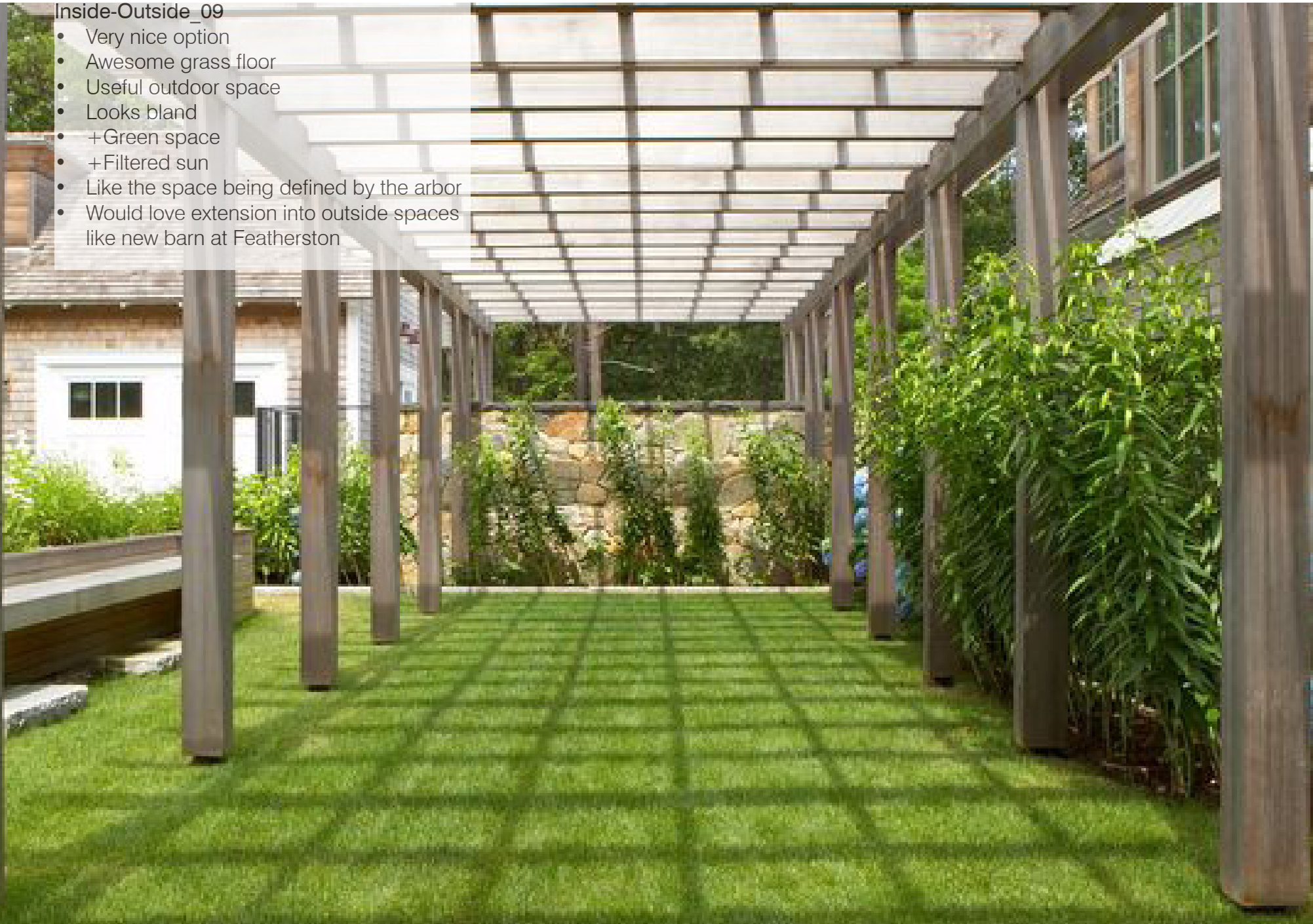
Inside-Outside_08

- No
- Nice feel outside
- Lovely connection to outdoor space, that is useable
- Very layered but a bit formal



Inside-Outside_09

- Very nice option
- Awesome grass floor
- Useful outdoor space
- Looks bland
- +Green space
- +Filtered sun
- Like the space being defined by the arbor
- Would love extension into outside spaces like new barn at Featherston



Inside-Outside_10

- Lovely courtyard feeling, trees and flowers
- Too hard to maintain
- Like the cobblestone
- Like the texture in this space, materials used, and planting



Inside-Outside_11

- Love the glass walls that bring the outside in and still have the clerestory effect above
- Live covered space
- + Open air
- + Natural light
- Great outside/inside connection (x2)
- How about cafe outdoors?



Inside-Outside_12

- Like light + indoor/outdoor feeling
- Yes
- Open access to outdoors
- Interesting design, like wood, glass doors, and views
- Warm and inviting, lovely



Inside-Outside_13

- + Organic (x2)
- + Window seat
- Like the windows, simple design, light coming in from outside
- Like windows, like less plant material
- Great space with columnless corner and operating windows
- Love big glass, could it be passive solar?



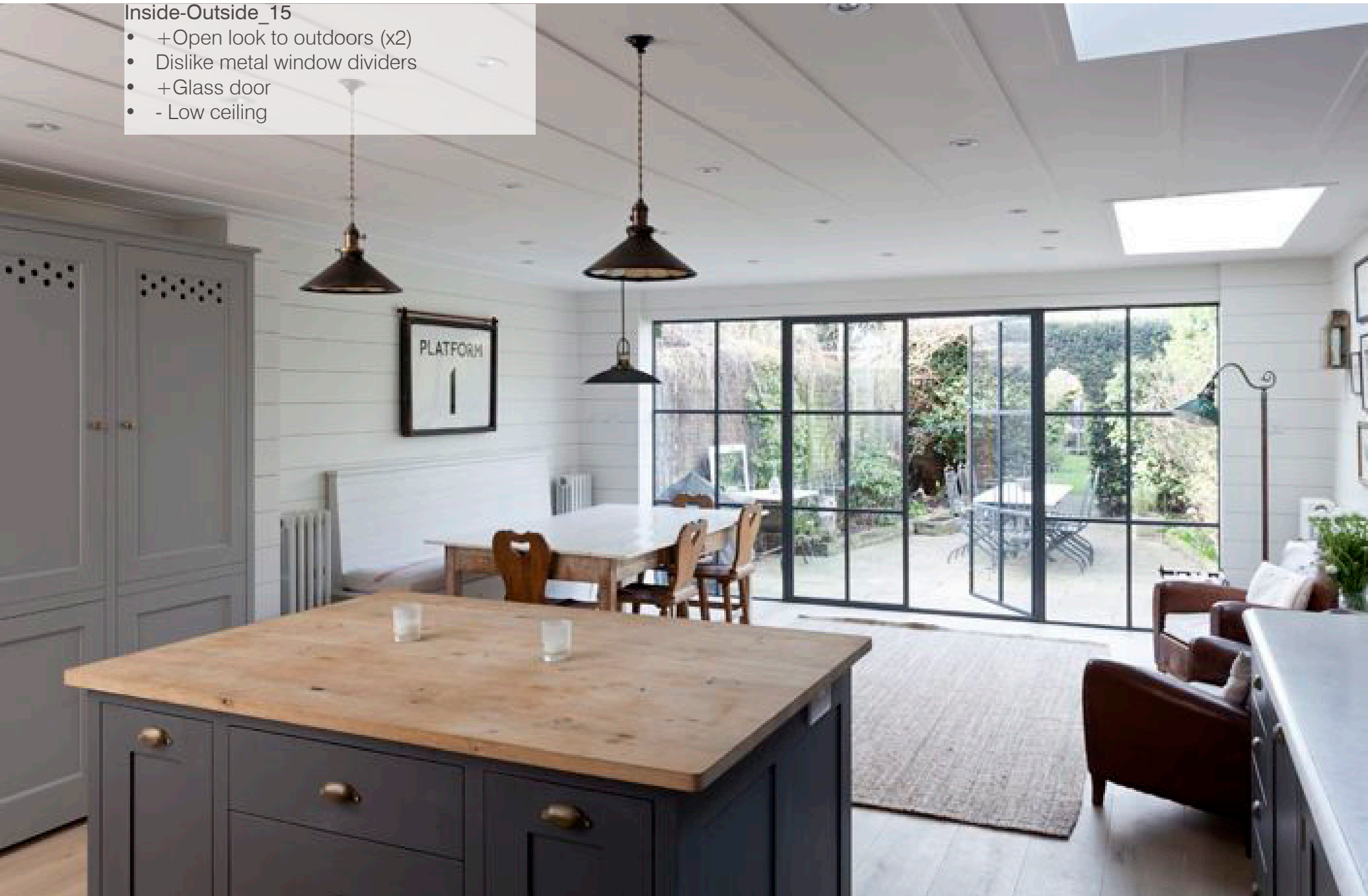
Inside-Outside_14

- Fits with homes in area
- Too traditional
- No thank you
- Fitting with existing architecture
- Too residential



Inside-Outside_15

- + Open look to outdoors (x2)
- Dislike metal window dividers
- + Glass door
- - Low ceiling



Inside-Outside_16

- Not us
- Cool little garden

