

## Accessibility Survey

---



### Town of Tisbury Library

200 Main Street  
Vineyard Haven, MA 02568

Date of Inspection  
4/30/2019

**Library**

**Passenger Loading Zones - Exterior : Passenger Loading Zone**

---

**Passenger Loading Zone/Book Drop**

Passenger Loading Zone : No Access Aisle

**Finding**

There is no required striped access aisle adjacent to the passenger loading zone.

**On-Site Finding**    None Found

**Recommendation**

Create an access aisle to meet the required minimum width and length adjacent and parallel to the vehicle pull-up space. The access aisle striping for the passenger loading zone shall provide immediate access to an adjacent curb ramp or primary path of travel.

Recommendation      See Recommendation

**Costing Info (Estimated)**

Stripe vehicle space and install sign    \$650

**Code Reference**    MA 23.7,    ADA 502, 503, 503.3

**Record Number**      51123



## Library

### Passenger Loading Zones - Exterior : Passenger Loading Zone

---

#### Passenger Loading Zone/Book Drop

Passenger Loading Zone : No Sign

#### Finding

Passenger loading zone has no sign.

**On-Site Finding** Not Marked

#### Recommendation

Mark the passenger loading zone with ISA symbol of accessibility.

Recommendation See Recommendation

#### Costing Info (Estimated)

Mark access aisle \$220

**Code Reference** ADA 503.3.3

**Record Number** 51124



### Path of Travel - Exterior : Path Of Travel , Walking Surfaces

---

#### Path from 1st Floor Childrens Library to Patio

#### Change in Level

Path Of Travel , Walking Surfaces : Change in Level

#### Finding

There is a change in elevation greater than recommended value.

**On-Site Finding** 1.50 inches

#### Recommendation

Ensure that the change in elevation is within the recommended value.

Recommendation Up to 0.25 inches

#### Costing Info (Estimated)

Provide smooth surface \$750

**Code Reference** MA 20.10, ADA 303, 403.4

**Record Number** 51122



## Library

### Path of Travel - Exterior : Path Of Travel , Walking Surfaces

---

#### Path from Greenwood Avenue to Patio

##### Exterior Walkway

Path Of Travel , Walking Surfaces :  
Noncompliant Surface

##### Finding

The path of travel is grass, dirt, or gravel, preventing access to individuals with mobility impairments.

**On-Site Finding** Dirt, Grass or Gravel

##### Recommendation

Provide an accessible route.

Recommendation See Recommendation

##### Costing Info (Estimated)

Install pathway \$1,840

**Code Reference** MA 29.1, ADA 302, 303, 403.2

**Record Number** 51152



### Path of Travel - Exterior : Path Of Travel , Grates

---

#### Path from Lower Level Library Emergency Exit

##### Grate

Path Of Travel , Grates : Grating

##### Finding

There is grating with elongated openings greater than allowed on the primary path of travel.

**On-Site Finding** 1.00 inches

##### Recommendation

Replace the grating with a grating that provides openings that are compliant. If the grating has elongated openings, the grating shall be set where the elongated openings are perpendicular to the dominant direction of travel.

Recommendation Up to 0.50 inches

##### Costing Info (Estimated)

\$1,088

**Code Reference** MA 29.4, ADA 302, 302.3

**Record Number** 51108





## Library

### Path of Travel - Exterior : Path Of Travel , Walking Surfaces

---

#### Path from Main Street - Left

##### Change in Level

Path Of Travel , Walking Surfaces : Change in Level

##### Finding

There is a change in elevation greater than recommended value.

**On-Site Finding** 0.62 inches

##### Recommendation

Ensure that the change in elevation is within the recommended value.

Recommendation Up to 0.25 inches

##### Costing Info (Estimated)

Provide smooth surface \$450

**Code Reference** MA 20.10, ADA 303, 403.4

**Record Number** 51166



### Path of Travel - Exterior : Path Of Travel , Walking Surfaces

---

#### Path from Main Street - Left

##### Exterior Walkway

Path Of Travel , Walking Surfaces : Walking Surface Slope

##### Finding

There are slopes greater than allowed maximum slope on the primary path of travel.

**On-Site Finding** 6.90 percent for 35.00 feet

##### Recommendation

Provide a compliant path of travel.

Recommendation Up to 5.00 percent

##### Costing Info (Estimated)

Install pathway \$3,600

**Code Reference** MA 20.9, ADA 402, 403.3

**Record Number** 51165



## Library

### Path of Travel - Exterior : Path Of Travel , Walking Surfaces

---

#### Path from Main Street - Right

##### Change in Level

Path Of Travel , Walking Surfaces : Change in Level

##### Finding

There is a change in elevation greater than recommended value.

**On-Site Finding** 0.50 inches

##### Recommendation

Ensure that the change in elevation is within the recommended value.

Recommendation Up to 0.25 inches

##### Costing Info (Estimated)

Provide smooth surface \$450

**Code Reference** MA 20.10, ADA 303, 403.4

**Record Number** 51087



### Path of Travel - Exterior : Path Of Travel , Walking Surfaces

---

#### Path from On-Street Parking to Main Entrance

##### Change in Level

Path Of Travel , Walking Surfaces : Change in Level

##### Finding

There is a change in elevation greater than recommended value.

**On-Site Finding** 0.50 inches

##### Recommendation

Ensure that the change in elevation is within the recommended value.

Recommendation Up to 0.25 inches

##### Costing Info (Estimated)

Provide smooth surface \$300

**Code Reference** MA 20.10, ADA 303, 403.4

**Record Number** 51170



**Library**

**Path of Travel - Exterior : Path Of Travel**

---

**Path from On-Street Parking to Main Entrance**  
**Exterior Walkway**

Path Of Travel : Opening

**Finding**

Walking surface has an opening that is not compliant.

**On-Site Finding** Not Compliant

**Recommendation**

Make sure that the walking surface opening does not allow passage of a sphere more than ½ inch in diameter.

Recommendation See Recommendation

**Costing Info (Estimated)**

Resurface the area \$185

**Code Reference** ADA 302.3

**Record Number** 51169



**Path of Travel - Exterior : Path Of Travel , Walking Surfaces**

---

**Path from Passenger Loading Zone/Book Drop**  
**Change in Level**

Path Of Travel , Walking Surfaces : Change in Level

**Finding**

There is a change in elevation greater than recommended value.

**On-Site Finding** 0.62 inches

**Recommendation**

Ensure that the change in elevation is within the recommended value.

Recommendation Up to 0.25 inches

**Costing Info (Estimated)**

Provide smooth surface \$300

**Code Reference** MA 20.10, ADA 303, 403.4

**Record Number** 51094



## Library

### Path of Travel - Exterior : Path Of Travel , Walking Surfaces

---

#### Path from Passenger Loading Zone/Book Drop Exterior Walkway

Path Of Travel , Walking Surfaces : Walking Surface Slope

##### Finding

There are slopes greater than allowed maximum slope on the primary path of travel.

**On-Site Finding** 5.50 percent for 30.00 feet

##### Recommendation

Provide a compliant path of travel.

Recommendation Up to 5.00 percent

##### Costing Info (Estimated)

Install pathway \$3,600

**Code Reference** MA 20.9, ADA 402, 403.3

**Record Number** 51091



### Path of Travel - Exterior : Path Of Travel , Walking Surfaces

---

#### Path from Passenger Loading Zone/Book Drop Exterior Walkway

Path Of Travel , Walking Surfaces : Walking Surface Cross Slope

##### Finding

There are cross slopes greater than allowed on the primary path of travel.

**On-Site Finding** 9.30 percent for 30.00 feet

##### Recommendation

Provide a compliant path of travel.

Recommendation Up to 2.08 percent

##### Costing Info (Estimated)

Install pathway \$3,600

**Code Reference** MA 20.9, ADA 402, 403.3

**Record Number** 51092





## Library

### Path of Travel - Exterior : Path Of Travel , Walking Surfaces

---

#### Path from Passenger Loading Zone/Book Drop Exterior Walkway

Path Of Travel , Walking Surfaces : Sidewalk Width

##### Finding

The width of the path of travel is insufficient.

**On-Site Finding** 32.50 inches for 30.00 feet

##### Recommendation

Widen the primary path of travel to provide the correct width.

Recommendation At least 36.00 inches

##### Costing Info (Estimated)

Widen pathway \$3,500

**Code Reference** MA 20.3, ADA 403.5.1

**Record Number** 51093



### Path of Travel - Exterior : Path Of Travel , Walking Surfaces

---

#### Path Next to Patio

#### Exterior Walkway

Path Of Travel , Walking Surfaces : Noncompliant Surface

##### Finding

The surface of the primary accessible path of travel is rough and uneven, providing a hazardous surface for individuals with mobility impairments and the general public.

**On-Site Finding** Rough and Uneven

##### Recommendation

Resurface the path of travel to provide a smooth, firm, stable and slip-resistant surface.

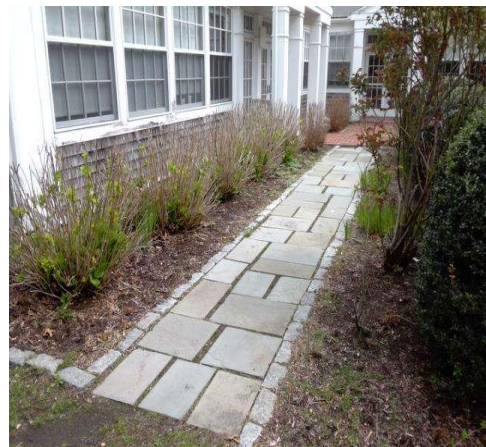
Recommendation See Recommendation

##### Costing Info (Estimated)

Widen pathway \$1,840

**Code Reference** MA 29.1, ADA 302, 303, 403.2

**Record Number** 51136



## Library

### Doors - Exterior : Door , Hardware

---

#### Backyard Patio Gate

##### Lever

Door , Hardware : Bottom Door Panel

##### Finding

The bottom of the door does not provide a smooth, uninterrupted surface, or panel to allow the door to be opened by a wheelchair footrest without creating a trap or hazardous condition.

**On-Site Finding** None Found

##### Recommendation

Install a panel or replace the door to provide a smooth, uninterrupted surface at the bottom of the door.

Recommendation See Recommendation

##### Costing Info (Estimated)

Install compliant door \$2,000

**Code Reference** ADA 404, 404.2.10

**Record Number** 51132



### Doors - Exterior : Door , Latch Side Clearance

---

#### Backyard Patio Gate

##### Pull Side

Door , Latch Side Clearance : Front Approach  
Latch Side Clearance

##### Finding

There is less than the required latch side clearance on the pull side of the door.

**On-Site Finding** 0.00 inches

##### Recommendation

Provide required latch side clearance on the pull side of the door.

Recommendation At least 18.00 inches

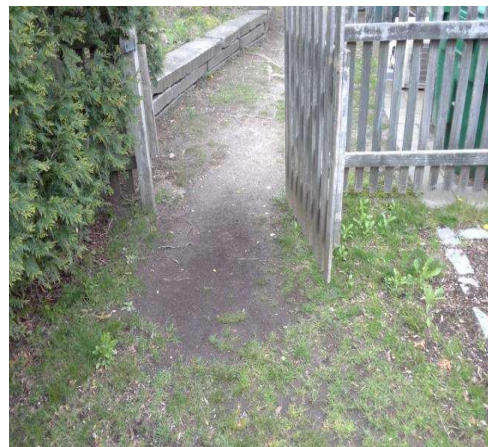
##### Costing Info (Estimated)

Install automatic door opener \$2,921

**Code Reference** MA 26.6, ADA 404, 404.2.4

Notes : Landing is Dirt/Grass/Gravel.

**Record Number** 51133



## Library

### Doors - Exterior : Door , Clear Floor Space

---

#### Backyard Patio Gate

##### Pull Side

Door , Clear Floor Space : Front Approach Clear Floor Space Length

##### Finding

There is not enough clear floor space provided at the pull side of the door.

**On-Site Finding** 0.00 inches

##### Recommendation

Provide the recommended clear floor space on the pull side of the door.

Recommendation At least 60.00 inches

##### Costing Info (Estimated)

Install automatic door opener \$2,921

**Code Reference** MA 26.6, ADA 404, 404.2.4

Notes : Landing is Dirt/Grass/Gravel.

**Record Number** 75772



### Doors - Exterior : Door , Clear Floor Space

---

#### Backyard Patio Gate

##### Push Side

Door , Clear Floor Space : Front Approach Clear Floor Space Length

##### Finding

There is not enough clear floor space provided at the push side of the door .

**On-Site Finding** 0.00 inches

##### Recommendation

Provide the recommended clear floor space on the push side of the door.

Recommendation At least 48.00 inches

##### Costing Info (Estimated)

Install automatic door opener \$4,000

**Code Reference** MA 26.6, ADA 404, 404.2.4

Notes : Landing is Dirt/Grass/Gravel.

**Record Number** 75771





## Signage - Exterior : Signage , Signage

### Directional Signage from Greenwood Avenue

Signage , Signage : No Directional or Information Signage

## Finding

There is no directional signage.

<b>On-Site Finding</b>	None Found
------------------------	------------

## Recommendation

Install directional signage to each accessible element or room.

Recommendation	See Recommendation
----------------	--------------------

### Costing Info (Estimated)

Install signage	\$316
-----------------	-------

<b>Code Reference</b>	MA 41.1, ADA 703, 216, 216.3, 703.5
-----------------------	-------------------------------------

Record Number 51080



## Signage - Exterior : Signage , Signage

### Directional Signage from Main Street

Signage , Signage : No Directional or Information Signage

## Finding

There is no directional signage.

**On-Site Finding**    None Found

## Recommendation

Install directional signage to each accessible element or room.

Recommendation	See Recommendation
----------------	--------------------

### Costing Info (Estimated)

Install signage	\$316
-----------------	-------

<b>Code Reference</b>	MA 41.1, ADA 703, 216, 216.3, 703.5
-----------------------	-------------------------------------

Record Number 51072





### Picnic Areas - Exterior : Picnic Tables

Picnic Tables : At least 5% not Accessible

At least 5% of the provided tables are not accessible.

## Recommendation

Recommendation	At least 1.00 tables
----------------	----------------------

Accessible table (each)	\$500
-------------------------	-------

Notes : Table is Not Accessible By Design.



Bench : On Accessible Route

The bench is not on an accessible route.

## Recommendation

Recommendation	See Recommendation
----------------	--------------------

Provide compliant route	\$1,840
-------------------------	---------



**Library**

**Benches - Exterior : Bench**

**Benches Next to Main Entrance**

Bench : Clear Floor Space

**Finding**

No clear floor space provided at the bench.

**On-Site Finding** Not Found

**Recommendation**

Provide compliant clear floor space for the bench at one end.

Recommendation See Recommendation

**Costing Info (Estimated)**

\$1,840

**Code Reference** ADA 305, 903.2

**Record Number** 51070



**On Street Parking - Exterior : On Street Parking , Parallel with Sidewalk**

**On-Street Parking**

**Left Parallel Parking Space**

On Street Parking , Parallel with Sidewalk :  
Adjacent Sidewalk - Width

**Finding**

The width of the adjacent sidewalk is not compliant.

**On-Site Finding** 42.00 inches

**Recommendation**

Provide enough width for the adjacent sidewalk.

Recommendation At least 168.00 inches

**Costing Info (Estimated)**

Unassigned

**Code Reference**

**Record Number** 51146



## Library

### On Street Parking - Exterior : On Street Parking , Parallel with Narrow Sidewalk

---

#### On-Street Parking

##### Left Parallel Parking Space

#### Finding

The signage posted at the accessible parking space is not located in a compliant location.

**On-Site Finding** Not Compliant

#### Recommendation

Relocate the signage posted at the accessible parking space so it is in a compliant location at the head or foot of the accessible parking space.

Recommendation See Recommendation

#### Costing Info (Estimated)

Unassigned

**Code Reference** PROWAG R211.4

**Record Number** 51147

On Street Parking , Parallel with Narrow Sidewalk : Signage Location



### On Street Parking - Exterior : On Street Parking , Parallel with Narrow Sidewalk

---

#### On-Street Parking

##### Left Parallel Parking Space

#### Finding

Signage at the accessible parking space contains the word "handicap".

**On-Site Finding** Not Compliant

#### Recommendation

Remove and/or replace all signage that contains the word "handicap".

Recommendation See Recommendation

#### Costing Info (Estimated)

Unassigned

**Code Reference** PROWAG R211.4

**Record Number** 51148

On Street Parking , Parallel with Narrow Sidewalk : Has "Handicap"



## Library

### On Street Parking - Exterior : On Street Parking , Parallel with Narrow Sidewalk

---

#### On-Street Parking

##### Left Parallel Parking Space

#### Finding

The accessible parking space is not located at the end of the block.

**On-Site Finding** Not Compliant

#### Recommendation

Relocate the accessible parking space to the end of the block.

Recommendation See Recommendation

#### Costing Info (Estimated)

Unassigned

**Code Reference** PROWAG R309.2.2

**Record Number** 51149

On Street Parking , Parallel with Narrow Sidewalk : Location



### On Street Parking - Exterior : On Street Parking , Parallel with Sidewalk

---

#### On-Street Parking

##### Right Parallel Parking Space

#### Finding

The width of the adjacent sidewalk is not compliant.

**On-Site Finding** 42.00 inches

#### Recommendation

Provide enough width for the adjacent sidewalk.

Recommendation At least 168.00 inches

#### Costing Info (Estimated)

Unassigned

**Code Reference**

**Record Number** 51141

On Street Parking , Parallel with Sidewalk : Adjacent Sidewalk - Width





## Library

### On Street Parking - Exterior : On Street Parking , Parallel with Narrow Sidewalk

---

#### On-Street Parking

##### Right Parallel Parking Space

#### Finding

An accessible route to the pedestrian access route is not provided.

**On-Site Finding** Not Found

#### Recommendation

Provide an accessible route from the accessible parking space to the pedestrian access route.

Recommendation See Recommendation

#### Costing Info (Estimated)

Unassigned

**Code Reference** PROWAG R309.2.2

**Record Number** 51142

On Street Parking , Parallel with Narrow Sidewalk : Accessible Route



### On Street Parking - Exterior : On Street Parking , Parallel with Narrow Sidewalk

---

#### On-Street Parking

##### Right Parallel Parking Space

#### Finding

The signage posted at the accessible parking space is not located in a compliant location.

**On-Site Finding** Not Compliant

#### Recommendation

Relocate the signage posted at the accessible parking space so it is in a compliant location at the head or foot of the accessible parking space.

Recommendation See Recommendation

#### Costing Info (Estimated)

Unassigned

**Code Reference** PROWAG R211.4

**Record Number** 51143

On Street Parking , Parallel with Narrow Sidewalk : Signage Location



## Library

### On Street Parking - Exterior : On Street Parking , Parallel with Narrow Sidewalk

---

#### On-Street Parking

##### Right Parallel Parking Space

#### Finding

Signage at the accessible parking space contains the word "handicap".

**On-Site Finding** Not Compliant

#### Recommendation

Remove and/or replace all signage that contains the word "handicap".

Recommendation See Recommendation

#### Costing Info (Estimated)

Unassigned

**Code Reference** PROWAG R211.4

**Record Number** 51144

On Street Parking , Parallel with Narrow Sidewalk : Has "Handicap"



### On Street Parking - Exterior : On Street Parking , Parallel with Narrow Sidewalk

---

#### On-Street Parking

##### Right Parallel Parking Space

#### Finding

The accessible parking space is not located at the end of the block.

**On-Site Finding** Not Compliant

#### Recommendation

Relocate the accessible parking space to the end of the block.

Recommendation See Recommendation

#### Costing Info (Estimated)

Unassigned

**Code Reference** PROWAG R309.2.2

**Record Number** 51145

On Street Parking , Parallel with Narrow Sidewalk : Location



**Library**

**Path of Travel - Library : Path Of Travel , Walking Surfaces**

---

**1st Floor Libraries**

**Floor Mat**

Path Of Travel , Walking Surfaces : Mat or Runner

**Finding**

The mats or carpet runners do not adhere to the underlying floor surface and slip, thereby creating a hazardous path of travel.

**On-Site Finding** Not Accessible

**Recommendation**

Securely fasten the mats or carpet runners or replace with a mat or carpet runner that grips to the underlying floor surface to provide a firm, stable, continuous and relatively smooth path of travel surface. Mats or carpet runners along the primary path of travel shall provide beveled edges on all sides to prevent roll over.

Recommendation See Recommendation



**Costing Info (Estimated)**

Install mat or carpet runner that grips to the underlying floor surface \$126

**Code Reference** MA 29.3, ADA 302, 302.2

**Record Number** 51106

## Stairs - Library : Stairway , Handrails

## Stairs to Main Entrance

## Run 1 Left Handrail

Stairway , Handrails : Handrail Interrupted

## Finding

The gripping surface of the handrail is interrupted.

**On-Site Finding** Interrupted

## Recommendation

Remount the handrails so they are not interrupted. Otherwise, replace the handrails with ones that provide a smooth, uninterrupted gripping surface.

Recommendation	See Recommendation
1. The Board should establish a policy on the use of social media by employees.	See Recommendation 2.
2. The Board should establish a policy on the use of social media by employees.	See Recommendation 1.
3. The Board should establish a policy on the use of social media by employees.	See Recommendation 4.
4. The Board should establish a policy on the use of social media by employees.	See Recommendation 3.

### Costing Info (Estimated)

Add compliant handrail	\$1,840
------------------------	---------

**Code Reference** MA 27.4.6, ADA 504, 505.6, 504.6

Record Number 51081





**Library**

**Stairs - Library : Stairway , Handrails**

---

**Stairs to Main Entrance**

**Run 1 Left Handrail**

Stairway , Handrails : Handrail Extension not Parallel

**Finding**

The top handrail extension of the stairway is not parallel with the floor surface at the top landing.

**On-Site Finding** Not Parallel

**Recommendation**

Install a compliant handrail extension to the top of the handrail that extends beyond the top riser and is parallel to the floor surface of the landing.

Recommendation See Recommendation

**Costing Info (Estimated)**

Add compliant extension to existing railing \$800

**Code Reference** MA 27.4.3, ADA 504, 504.6, 505.10.2

**Record Number** 51082



**Stairs - Library : Stairway , Handrails**

---

**Stairs to Main Entrance**

**Run 1 Left Handrail**

Stairway , Handrails : Handrail Height

**Finding**

The handrails are not mounted at the required height.

**On-Site Finding** 47.00 inches

**Recommendation**

Provide handrails on the stairway at the required height.

Recommendation 34.00 - 38.00 inches

**Costing Info (Estimated)**

Add compliant handrail \$1,528

**Code Reference** MA 27.4.2, ADA 504, 504.6, 505.4

**Record Number** 51083



## Library

### Stairs - Library : Stairway , Handrails

---

#### Stairs to Main Entrance

##### Run 1 Right Handrail

Stairway , Handrails : Handrail Interrupted

#### Finding

The gripping surface of the handrail is interrupted.

**On-Site Finding** Interrupted

#### Recommendation

Remount the handrails so they are not interrupted. Otherwise, replace the handrails with ones that provide a smooth, uninterrupted gripping surface.

Recommendation See Recommendation

#### Costing Info (Estimated)

Add compliant handrail \$1,840

**Code Reference** MA 27.4.6, ADA 504, 505.6, 504.6

**Record Number** 51084



### Stairs - Library : Stairway , Handrails

---

#### Stairs to Main Entrance

##### Run 1 Right Handrail

Stairway , Handrails : Handrail Extension not Parallel

#### Finding

The top handrail extension of the stairway is not parallel with the floor surface at the top landing.

**On-Site Finding** Not Parallel

#### Recommendation

Install a compliant handrail extension to the top of the handrail that extends beyond the top riser and is parallel to the floor surface of the landing.

Recommendation See Recommendation

#### Costing Info (Estimated)

Add compliant extension to existing railing \$800

**Code Reference** MA 27.4.3, ADA 504, 504.6, 505.10.2

**Record Number** 51085



**Library**

**Stairs - Library : Stairway , Handrails**

---

**Stairs to Main Entrance**

**Run 1 Right Handrail**

Stairway , Handrails : Handrail Height

**Finding**

The handrails are not mounted at the required height.

**On-Site Finding** 44.00 inches

**Recommendation**

Provide handrails on the stairway at the required height.

Recommendation 34.00 - 38.00 inches

**Costing Info (Estimated)**

Add compliant handrail \$1,528

**Code Reference** MA 27.4.2, ADA 504, 504.6, 505.4

**Record Number** 51086



**Doors - Library : Door , Hardware**

---

**1st Floor Childrens Library - Exterior**

**Push Bar / Lever**

Door , Hardware : Bottom Door Panel

**Finding**

The bottom of the door does not provide a smooth, uninterrupted surface, or panel to allow the door to be opened by a wheelchair footrest without creating a trap or hazardous condition.

**On-Site Finding** None Found

**Recommendation**

Install a panel or replace the door to provide a smooth, uninterrupted surface at the bottom of the door.

Recommendation See Recommendation

**Costing Info (Estimated)**

Install compliant door \$2,000

**Code Reference** ADA 404, 404.2.10

**Record Number** 50898



## Library

### Doors - Library : Door

---

#### 1st Floor Childrens Library - Exterior

Door : Door Closer Vertical Clearance

##### Finding

The door closing device limits the required headroom clearance.

**On-Site Finding** 77.00 inches

##### Recommendation

Replace the door closing device with a device that fits above the door casing and does not protrude into the primary path of travel.

Recommendation At least 78.00 inches

##### Costing Info (Estimated)

Install new door opener \$250

**Code Reference** MA 20.7, ADA 404, 404.2.3

**Record Number** 51067



### Doors - Library : Door

---

#### 1st Floor Childrens Library - Exterior

Door : Door Opening Width

##### Finding

The clear opening width of the door is less than required.

**On-Site Finding** 30.75 inches

##### Recommendation

Widen the door opening and install a door that provides at least the minimum clear width with the door open 90 degrees.

Recommendation At least 32.00 inches

##### Costing Info (Estimated)

Widen existing door and add accessible hardware \$1,750

**Code Reference** MA 26.5, ADA 404, 404.2.3

**Record Number** 51068





## Library

### Doors - Library : Door , Latch Side Clearance

---

#### 1st Floor Childrens Library Stairs

##### Pull Side

Door , Latch Side Clearance : Front Approach  
Latch Side Clearance

##### Finding

There is less than the required latch side clearance on the pull side of the door.

**On-Site Finding** 0.00 inches

##### Recommendation

Provide required latch side clearance on the pull side of the door.

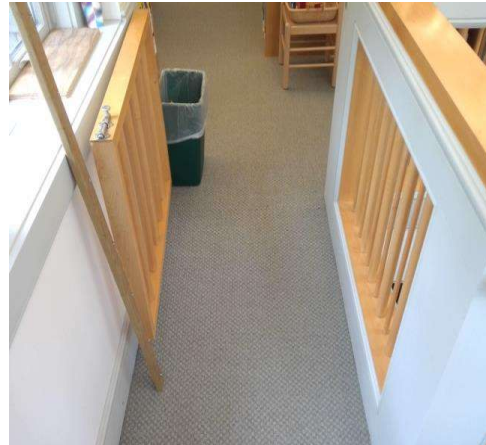
Recommendation At least 18.00 inches

##### Costing Info (Estimated)

Install automatic door opener \$4,000

**Code Reference** MA 26.6, ADA 404, 404.2.4

**Record Number** 51155



### Doors - Library : Door , Hardware

---

#### 1st Floor Childrens Library Stairs

##### Push / Pull

Door , Hardware : Bottom Door Panel

##### Finding

The bottom of the door does not provide a smooth, uninterrupted surface, or panel to allow the door to be opened by a wheelchair footrest without creating a trap or hazardous condition.

**On-Site Finding** None Found

##### Recommendation

Install a panel or replace the door to provide a smooth, uninterrupted surface at the bottom of the door.

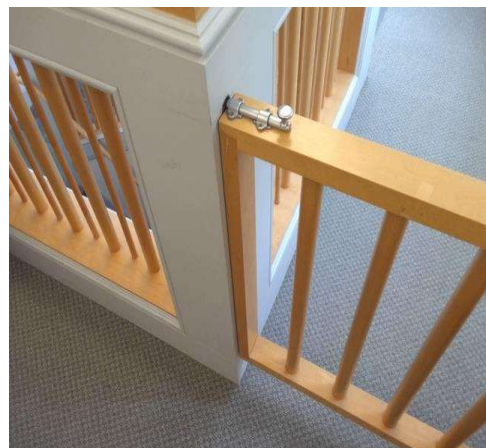
Recommendation See Recommendation

##### Costing Info (Estimated)

Install compliant door \$2,000

**Code Reference** ADA 404, 404.2.10

**Record Number** 51154



## Library

### Doors - Library : Door , Clear Floor Space

---

#### 1st Floor Library - Exterior

##### Pull Side

Door , Clear Floor Space : Floor Surface Slope

##### Finding

There is no level landing at this door.

**On-Site Finding** 4.90 percent

##### Recommendation

Provide a level landing.

Recommendation Up to 2.08 percent

##### Costing Info (Estimated)

Correct slopes \$1,500

**Code Reference** MA 26.6, ADA 302, 404, 305, 404.2.4.4

**Record Number** 50937



### Doors - Library : Door , Hardware

---

#### 1st Floor Library - Exterior

##### Push Bar / Lever

Door , Hardware : Bottom Door Panel

##### Finding

The bottom of the door does not provide a smooth, uninterrupted surface, or panel to allow the door to be opened by a wheelchair footrest without creating a trap or hazardous condition.

**On-Site Finding** None Found

##### Recommendation

Install a panel or replace the door to provide a smooth, uninterrupted surface at the bottom of the door.

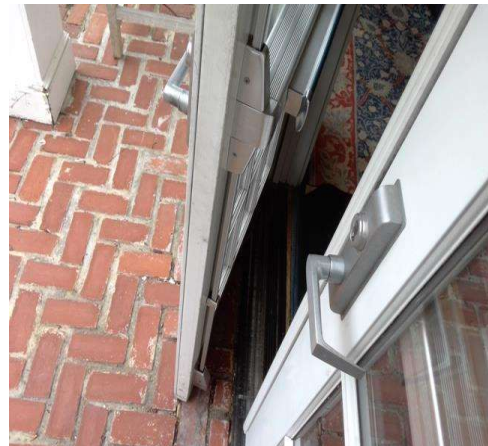
Recommendation See Recommendation

##### Costing Info (Estimated)

Install compliant door \$2,000

**Code Reference** ADA 404, 404.2.10

**Record Number** 50935



**Library**

**Doors - Library : Door , Clear Floor Space**

---

**1st Floor Library - Exterior**

**Push Side**

Door , Clear Floor Space : Floor Mat

**Finding**

An unstable floor mat is provided at the door landing.

**On-Site Finding** Not Compliant

**Recommendation**

Provide a compliant floor mat for the door.

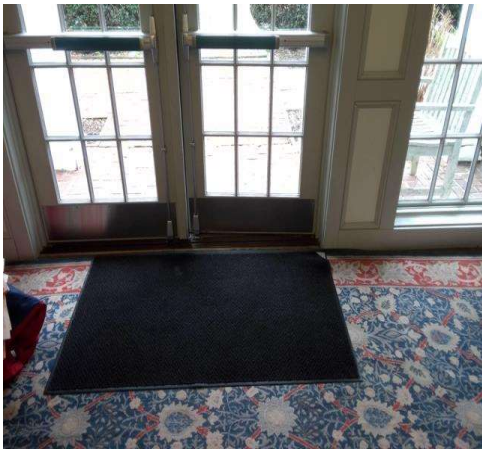
Recommendation See Recommendation

**Costing Info (Estimated)**

Install mat that grips to the floor surface \$126

**Code Reference** ADA 403.2, 302.1

**Record Number** 50936



**Doors - Library : Door**

---

**1st Floor Library - Exterior**

Door : Door Closer Vertical Clearance

**Finding**

The door closing device limits the required headroom clearance.

**On-Site Finding** 77.25 inches

**Recommendation**

Replace the door closing device with a device that fits above the door casing and does not protrude into the primary path of travel.

Recommendation At least 78.00 inches

**Costing Info (Estimated)**

Install new door opener \$250

**Code Reference** MA 20.7, ADA 404, 404.2.3

**Record Number** 52346



**Library**

**Doors - Library : Door**

---

**1st Floor Library - Exterior**

Door : Door Opening Width

**Finding**

The clear opening width of the door is less than required.

**On-Site Finding** 31.37 inches

**Recommendation**

Widen the door opening and install a door that provides at least the minimum clear width with the door open 90 degrees.

Recommendation At least 32.00 inches

**Costing Info (Estimated)**

Widen existing door and add accessible hardware \$1,750

**Code Reference** MA 26.5, ADA 404, 404.2.3

**Record Number** 52347



**Doors - Library : Door , Hardware**

---

**1st Floor Library Director**

**Lever**

Door , Hardware : Door Lock

**Finding**

The door lock requires tight grasping, pinching, or twisting of the wrist to operate.

**On-Site Finding** Not Accessible

**Recommendation**

Provide a compliant door lock for the door that does not require tight grasping, pinching, or twisting of the wrist to operate.

Recommendation See Recommendation

**Costing Info (Estimated)**

Provide door lock \$310

**Code Reference** ADA 404.2.7, 309.4

**Record Number** 50889





## Library

### Doors - Library : Door , Hardware

---

#### 1st Floor Library Study Room

##### Lever

Door , Hardware : Door Lock

##### Finding

The door lock requires tight grasping, pinching, or twisting of the wrist to operate.

**On-Site Finding** Not Accessible

##### Recommendation

Provide a compliant door lock for the door that does not require tight grasping, pinching, or twisting of the wrist to operate.

Recommendation See Recommendation

##### Costing Info (Estimated)

Provide door lock \$310

**Code Reference** ADA 404.2.7, 309.4

**Record Number** 50905



### Doors - Library : Door , Hardware

---

#### 1st Floor Library Unisex Restroom - Left

##### Lever

Door , Hardware : Door Opening Pressure

##### Finding

The door opening force for this door is greater than allowed.

**On-Site Finding** 6.00 pounds

##### Recommendation

Adjust the closer on the door to meet the door opening force requirements.

Recommendation Up to 5.00 pounds

##### Costing Info (Estimated)

Adjust door closer pressure \$25

**Code Reference** MA 26.8, ADA 404, 404.2.9

**Record Number** 50938



## Library

### Doors - Library : Door , Hardware

---

#### 1st Floor Library Unisex Restroom - Left Lever

Door , Hardware : Door Lock

##### Finding

The door lock requires tight grasping, pinching, or twisting of the wrist to operate.

**On-Site Finding** Not Accessible

##### Recommendation

Provide a compliant door lock for the door that does not require tight grasping, pinching, or twisting of the wrist to operate.

Recommendation See Recommendation

##### Costing Info (Estimated)

Provide door lock \$310

**Code Reference** ADA 404.2.7, 309.4

**Record Number** 50939



### Doors - Library : Door , Latch Side Clearance

---

#### 1st Floor Library Unisex Restroom - Left Pull Side

Door , Latch Side Clearance : Front Approach  
Latch Side Clearance

##### Finding

There is less than the required latch side clearance on the pull side of the door.

**On-Site Finding** 11.37 inches

##### Recommendation

Provide required latch side clearance on the pull side of the door.

Recommendation At least 18.00 inches

##### Costing Info (Estimated)

Install automatic door opener \$4,000

**Code Reference** MA 26.6, ADA 404, 404.2.4

**Record Number** 50940



## Library

### Doors - Library : Door , Hardware

---

#### 1st Floor Library Unisex Restroom - Right Lever

Door , Hardware : Door Lock

##### Finding

The door lock requires tight grasping, pinching, or twisting of the wrist to operate.

**On-Site Finding** Not Accessible

##### Recommendation

Provide a compliant door lock for the door that does not require tight grasping, pinching, or twisting of the wrist to operate.

Recommendation See Recommendation

##### Costing Info (Estimated)

Provide door lock \$310

**Code Reference** ADA 404.2.7, 309.4

**Record Number** 50902



### Doors - Library : Door , Latch Side Clearance

---

#### 1st Floor Library Unisex Restroom - Right Pull Side

Door , Latch Side Clearance : Front Approach Latch Side Clearance

##### Finding

There is less than the required latch side clearance on the pull side of the door.

**On-Site Finding** 11.37 inches

##### Recommendation

Provide required latch side clearance on the pull side of the door.

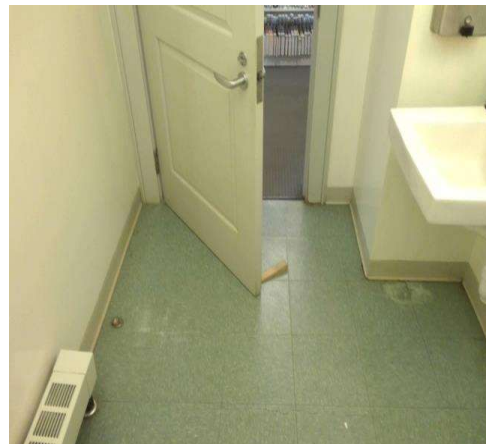
Recommendation At least 18.00 inches

##### Costing Info (Estimated)

Install automatic door opener \$4,000

**Code Reference** MA 26.6, ADA 404, 404.2.4

**Record Number** 50903



## Library

### Doors - Library : Door , Hardware

---

#### 1st Floor Staff Area

##### Lever

Door , Hardware : Door Lock

##### Finding

The door lock requires tight grasping, pinching, or twisting of the wrist to operate.

**On-Site Finding** Not Accessible

##### Recommendation

Provide a compliant door lock for the door that does not require tight grasping, pinching, or twisting of the wrist to operate.

Recommendation See Recommendation

##### Costing Info (Estimated)

Provide door lock \$310

**Code Reference** ADA 404.2.7, 309.4

**Record Number** 50904



### Doors - Library : Door , Hardware

---

#### 1st Floor Staff Area in Childrens Library

##### Lever

Door , Hardware : Door Lock

##### Finding

The door lock requires tight grasping, pinching, or twisting of the wrist to operate.

**On-Site Finding** Not Accessible

##### Recommendation

Provide a compliant door lock for the door that does not require tight grasping, pinching, or twisting of the wrist to operate.

Recommendation See Recommendation

##### Costing Info (Estimated)

Provide door lock \$310

**Code Reference** ADA 404.2.7, 309.4

**Record Number** 50906





**Library**

**Doors - Library : Door , Latch Side Clearance**

---

**1st Floor Staff Area in Childrens Library**

**Pull Side**

Door , Latch Side Clearance : Front Approach  
Latch Side Clearance

**Finding**

There is less than the required latch side clearance on the pull side of the door.

**On-Site Finding** 2.25 inches

**Recommendation**

Provide required latch side clearance on the pull side of the door.

Recommendation At least 18.00 inches

**Costing Info (Estimated)**

Install automatic door opener \$4,000

**Code Reference** MA 26.6, ADA 404, 404.2.4

**Record Number** 50907



**Signage - Library : Signage**

---

**1st Floor Childrens Library - Exterior**

Signage : No Room Identification

**Finding**

There is no room identification signage.

**On-Site Finding** None Found

**Recommendation**

Install room identification signage.

Recommendation See Recommendation

**Costing Info (Estimated)**

Install signage \$158

**Code Reference** MA 41.1, ADA 703, 216, 216.2

**Record Number** 50878





## Signage - Library : Signage

Signage : No Room Identification

There is no room identification signage.

**On-Site Finding**    None Found

Install room identification signage.

Recommendation	See Recommendation
----------------	--------------------

Install signage	\$158
-----------------	-------

<b>Code Reference</b>	MA 41.1, ADA 703, 216, 216.2
-----------------------	------------------------------

Record Number 50894



Signage , Signage : No Accessible  
Element/Entrance Signage

There is no room signage.

**On-Site Finding**    None Found

Install accessible room signage.

Recommendation	See Recommendation
1. The Board should establish a policy on the use of social media by employees.	See Recommendation 2.
2. The Board should establish a policy on the use of social media by employees.	See Recommendation 1.
3. The Board should establish a policy on the use of social media by employees.	See Recommendation 1.
4. The Board should establish a policy on the use of social media by employees.	See Recommendation 1.
5. The Board should establish a policy on the use of social media by employees.	See Recommendation 1.
6. The Board should establish a policy on the use of social media by employees.	See Recommendation 1.
7. The Board should establish a policy on the use of social media by employees.	See Recommendation 1.
8. The Board should establish a policy on the use of social media by employees.	See Recommendation 1.
9. The Board should establish a policy on the use of social media by employees.	See Recommendation 1.
10. The Board should establish a policy on the use of social media by employees.	See Recommendation 1.

Install signage	\$158
-----------------	-------

**Code Reference** MA 41.1, ADA 216.2, 216.6

Record Number 50929







## Signage - Library : Signage

## 1st Floor Staff Area in Childrens Library

Signage : No Room Identification

## Finding

There is no room identification signage.

**On-Site Finding**    None Found

## Recommendation

Install room identification signage.

Recommendation	See Recommendation
1. The Board should establish a policy on the use of social media by employees.	See Recommendation 2.
2. The Board should establish a policy on the use of social media by employees.	See Recommendation 1.
3. The Board should establish a policy on the use of social media by employees.	See Recommendation 1.
4. The Board should establish a policy on the use of social media by employees.	See Recommendation 1.
5. The Board should establish a policy on the use of social media by employees.	See Recommendation 1.
6. The Board should establish a policy on the use of social media by employees.	See Recommendation 1.
7. The Board should establish a policy on the use of social media by employees.	See Recommendation 1.
8. The Board should establish a policy on the use of social media by employees.	See Recommendation 1.
9. The Board should establish a policy on the use of social media by employees.	See Recommendation 1.
10. The Board should establish a policy on the use of social media by employees.	See Recommendation 1.

### Costing Info (Estimated)

Install signage	\$158
-----------------	-------

<b>Code Reference</b>	MA 41.1, ADA 703, 216, 216.2
-----------------------	------------------------------

Record Number 50895



## Signage - Library : Signage

## 1st Floor Staff Area Office

Signage : No Room Identification

## Finding

There is no room identification signage.

**On-Site Finding**    None Found

## Recommendation

Install room identification signage.

Recommendation	See Recommendation
1. The Board should establish a policy on the use of social media by employees.	See Recommendation 2.
2. The Board should establish a policy on the use of social media by employees.	See Recommendation 1.
3. The Board should establish a policy on the use of social media by employees.	See Recommendation 1.
4. The Board should establish a policy on the use of social media by employees.	See Recommendation 1.
5. The Board should establish a policy on the use of social media by employees.	See Recommendation 1.
6. The Board should establish a policy on the use of social media by employees.	See Recommendation 1.
7. The Board should establish a policy on the use of social media by employees.	See Recommendation 1.
8. The Board should establish a policy on the use of social media by employees.	See Recommendation 1.
9. The Board should establish a policy on the use of social media by employees.	See Recommendation 1.
10. The Board should establish a policy on the use of social media by employees.	See Recommendation 1.

### Costing Info (Estimated)

Install signage	\$158
-----------------	-------

<b>Code Reference</b>	MA 41.1, ADA 703, 216, 216.2
-----------------------	------------------------------

Record Number 50901



## Library

### Restrooms - Library : Restroom , Toilet

---

#### 1st Floor Library Unisex Restroom - Left

Restroom , Toilet : Toilet Distance From Wall

##### Finding

The distance from the center of the toilet to the nearest side wall does not meet the required distance.

**On-Site Finding** 19.50 inches on center

##### Recommendation

Relocate the toilet so the distance from the center line of the toilet to the nearest side wall meets the required distance.

Recommendation 16.00 - 18.00 inches

##### Costing Info (Estimated)

Relocate fixture \$2,500

**Code Reference** MA 30.7.2, ADA 603, 604.2

**Record Number** 50867



### Restrooms - Library : Restroom , Toilet

---

#### 1st Floor Library Unisex Restroom - Left

Restroom , Toilet : Toilet Flush Control not on Wide Side

##### Finding

The flush control on the toilet is not on the wide (approach) side of the toilet.

**On-Site Finding** Wrong Side of Toilet

##### Recommendation

Relocate the flush control so it is on the wide (approach) side of the toilet area. Flush controls shall be hand-operated or automatic mechanisms.

Recommendation See Recommendation

##### Costing Info (Estimated)

Relocate flush valve \$127

**Code Reference** MA 30.7.5, ADA 603, 604.6

**Record Number** 50869



## Library

### Restrooms - Library : Restroom , Grab Bars

---

#### 1st Floor Library Unisex Restroom - Left

Restroom , Grab Bars : Distance from Back Wall to Front of Grab Bar

##### Finding

The distance from the back wall to the front of the grab bar is less than required.

**On-Site Finding** 48.00 inches

##### Recommendation

Install or move the grab bar to create the required distance from the back wall to the front of the grab bar.

Recommendation At least 54.00 inches

##### Costing Info (Estimated)

Provide compliant grab bar \$267

**Code Reference** MA 30.8, ADA 603, 609, 604.5.1

**Record Number** 50870



### Restrooms - Library : Restroom , Toilet Compartment

---

#### 1st Floor Library Unisex Restroom - Left

Restroom , Toilet Compartment : Coat Hook Height

##### Finding

The coat hook is not mounted at the correct height.

**On-Site Finding** 64.00 inches

##### Recommendation

Mount the coat hook at the recommended height.

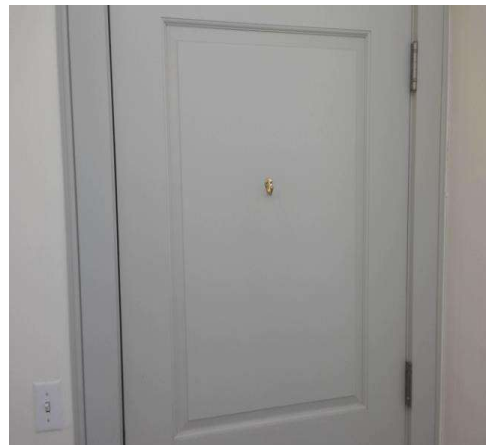
Recommendation 15.00 - 48.00 inches

##### Costing Info (Estimated)

Move coat hook \$50

**Code Reference** MA 30.6.1, MA 30.6.2, ADA 308, 603.4, 308.1

**Record Number** 50871



**Library**

**Restrooms - Library : Restroom , Lavatory**

---

**1st Floor Library Unisex Restroom - Left  
Lavatory**

Restroom , Lavatory : Lavatory Knee Clearance

**Finding**

The knee clearance space under the lavatory is less than the required minimum height.

**On-Site Finding** 26.25 inches

**Recommendation**

Raise or replace the lavatory to provide the minimum required knee clearance.

Recommendation At least 27.00 inches

**Costing Info (Estimated)**

Provide compliant lavatory \$1,286

**Code Reference** MA 30.9.3, ADA 213, 606, 606.2, 306.3.1

**Record Number** 50880



**Restrooms - Library : Restroom , Lavatory**

---

**1st Floor Library Unisex Restroom - Left  
Lavatory**

Restroom , Lavatory : Lavatory - Supply Lines not wrapped

**Finding**

Supply lines are not wrapped at the lavatory.

**On-Site Finding** Not Wrapped

**Recommendation**

Wrap the supply lines around lavatory according to compliance.

Recommendation See Recommendation

**Costing Info (Estimated)**

Wrap supply lines \$149

**Code Reference** MA 30.9.5, ADA 213, 606, 606.5

**Record Number** 50882





## Library

### Restrooms - Library : Restroom , Mirror

---

#### 1st Floor Library Unisex Restroom - Left

Restroom , Mirror : Mirror Bottom Edge Height

##### Finding

The bottom edge of the reflective surface of the mirror is not at the correct height.

**On-Site Finding** 41.25 inches

##### Recommendation

Lower the mirror so the bottom edge of the reflective surface is no higher than recommended above the finished floor.

Recommendation Up to 40.00 inches

##### Costing Info (Estimated)

Lower mirror \$300

**Code Reference** MA 30.11, ADA 603, 213, 603.3

**Record Number** 50883



### Restrooms - Library : Restroom , Wall Signage

---

#### 1st Floor Library Unisex Restroom - Left

##### Wall Sign

Restroom , Wall Signage : No Wall Signage

##### Finding

There is no signage indicating accessibility on the latch side of the entry door of the restroom.

**On-Site Finding** None Found

##### Recommendation

Provide compliant signage on latch side of door.

Recommendation See Recommendation

##### Costing Info (Estimated)

Install signage \$158

**Code Reference** MA 41.1, ADA 703, 216, 216.8

**Record Number** 50884



## Library

### Restrooms - Library : Restroom , Lavatory

---

#### 1st Floor Library Unisex Restroom - Right Lavatory

Restroom , Lavatory : Lavatory Knee Clearance

##### Finding

The knee clearance space under the lavatory is less than the required minimum height.

**On-Site Finding** 26.00 inches

##### Recommendation

Raise or replace the lavatory to provide the minimum required knee clearance.

Recommendation At least 27.00 inches

##### Costing Info (Estimated)

Provide compliant lavatory \$1,286

**Code Reference** MA 30.9.3, ADA 213, 606, 606.2, 306.3.1

**Record Number** 50908



### Restrooms - Library : Restroom , Lavatory

---

#### 1st Floor Library Unisex Restroom - Right Lavatory

Restroom , Lavatory : Lavatory - Supply Lines not wrapped

##### Finding

Supply lines are not wrapped at the lavatory.

**On-Site Finding** Not Wrapped

##### Recommendation

Wrap the supply lines around lavatory according to compliance.

Recommendation See Recommendation

##### Costing Info (Estimated)

Wrap supply lines \$149

**Code Reference** MA 30.9.5, ADA 213, 606, 606.5

**Record Number** 50910



## Library

### Restrooms - Library : Restroom , Mirror

---

#### 1st Floor Library Unisex Restroom - Right

Restroom , Mirror : Mirror Bottom Edge Height

##### Finding

The bottom edge of the reflective surface of the mirror is not at the correct height.

**On-Site Finding** 41.50 inches

##### Recommendation

Lower the mirror so the bottom edge of the reflective surface is no higher than recommended above the finished floor.

Recommendation Up to 40.00 inches

##### Costing Info (Estimated)

Lower mirror \$300

**Code Reference** MA 30.11, ADA 603, 213, 603.3

**Record Number** 50911



### Restrooms - Library : Restroom , Wall Signage

---

#### 1st Floor Library Unisex Restroom - Right

##### Wall Sign

Restroom , Wall Signage : No Wall Signage

##### Finding

There is no signage indicating accessibility on the latch side of the entry door of the restroom.

**On-Site Finding** None Found

##### Recommendation

Provide compliant signage on latch side of door.

Recommendation See Recommendation

##### Costing Info (Estimated)

Install signage \$158

**Code Reference** MA 41.1, ADA 703, 216, 216.8

**Record Number** 50912



## Library

### Restrooms - Library : Restroom , Toilet

---

#### 1st Floor Library Unisex Restroom - Right

Restroom , Toilet : Toilet Distance From Wall

##### Finding

The distance from the center of the toilet to the nearest side wall does not meet the required distance.

**On-Site Finding** 18.75 inches on center

##### Recommendation

Relocate the toilet so the distance from the center line of the toilet to the nearest side wall meets the required distance.

Recommendation 16.00 - 18.00 inches

##### Costing Info (Estimated)

Relocate fixture \$2,500

**Code Reference** MA 30.7.2, ADA 603, 604.2

**Record Number** 50925



### Restrooms - Library : Restroom , Grab Bars

---

#### 1st Floor Library Unisex Restroom - Right

Restroom , Grab Bars : Distance from Back Wall to Front of Grab Bar

##### Finding

The distance from the back wall to the front of the grab bar is less than required.

**On-Site Finding** 48.00 inches

##### Recommendation

Install or move the grab bar to create the required distance from the back wall to the front of the grab bar.

Recommendation At least 54.00 inches

##### Costing Info (Estimated)

Provide compliant grab bar \$267

**Code Reference** MA 30.8, ADA 603, 609, 604.5.1

**Record Number** 50927





**Library**

**Restrooms - Library : Restroom , Toilet Compartment**

---

**1st Floor Library Unisex Restroom - Right**

Restroom , Toilet Compartment : Coat Hook Height

**Finding**

The coat hook is not mounted at the correct height.

**On-Site Finding** 62.00 inches

**Recommendation**

Mount the coat hook at the recommended height.

Recommendation 15.00 - 48.00 inches

**Costing Info (Estimated)**

Move coat hook \$50

**Code Reference** MA 30.6.1,MA 30.6.2, ADA 308, 603.4, 308.1

**Record Number** 50928



**Drinking Fountains - Library : Drinking Fountain**

---

**1st Floor Drinking Fountain Next to Library Unisex Restrooms**

Drinking Fountain : Alcove Depth

**Finding**

The drinking fountain protrudes more than 4 inches outside of the alcove.

**On-Site Finding** See Above

**Recommendation**

Provide an alcove that will contain the entire depth of the drinking fountain.

Recommendation See Recommendation

**Costing Info (Estimated)**

Install wing walls or relocate object \$640

**Code Reference** MA 6.4.2, ADA 305, 307.2, 602.1

**Record Number** 50877



## Library

### Libraries - Library : Library , Computer Station

---

#### 1st Floor Childrens Library

##### Computer Station

Library , Computer Station : Computer Station  
Knee Clearance

##### Finding

The knee clearance height at the computer station for use primarily by children is not compliant.

**On-Site Finding** 23.50 inches

##### Recommendation

Provide a compliant computer station for use primarily by children.

Recommendation At least 24.00 inches

##### Costing Info (Estimated)

Adjust/Replace Table \$174

**Code Reference** ADA 403, 306, 902, 226, 221, 225, 902.4.1

**Record Number** 50885



### Libraries - Library : Library , Table

---

#### 1st Floor Childrens Library

##### Table

Library , Table : Table Knee Clearance

##### Finding

The knee clearance height at the table for use primarily by children is not compliant.

**On-Site Finding** 17.25 inches

##### Recommendation

Provide a compliant table for use primarily by children.

Recommendation At least 24.00 inches

##### Costing Info (Estimated)

Adjust/Replace Table \$174

**Code Reference** ADA 306, 902, 226

**Record Number** 50886



Library

Libraries - Library : Library , Table

1st Floor Childrens Library  
Table

Library , Table : Clear Floor Space Width

Finding

There is not enough clear floor space at the library table.

On-Site Finding 18.50 inches

Recommendation

Provide compliant clear floor space for the library table.

Recommendation At least 30.00 inches

Costing Info (Estimated)

\$1,840

Code Reference ADA 306, 902.2, 902.4.1

Record Number 50887



Libraries - Library : Library , Computer Station

1st Floor Library  
Card Catalog

Library , Computer Station : Computer Station  
Table Top Height

Finding

The height of the top of the table is not compliant.

On-Site Finding 41.37 inches

Recommendation

Provide a compliant computer workstation.

Recommendation 28.00 - 34.00 inches

Costing Info (Estimated)

\$500

Code Reference MA 12.2.2, 225, 902.3, ADA 403, 902, 221,

Record Number 50873



**Library**

**Libraries - Library : Library , Checkout Counter**

---

**1st Floor Library**

**Checkout**

Library , Checkout Counter : Check Out Counter Height

**Finding**

The height of the checkout counter is greater than required.

**On-Site Finding** 38.50 inches

**Recommendation**

Provide a checkout counter at the required height.

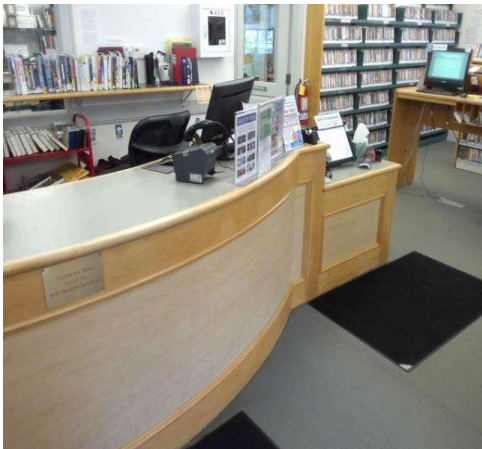
Recommendation 28.00 - 34.00 inches

**Costing Info (Estimated)**

Provide compliant counter \$545

**Code Reference** MA 12.2.3, ADA 904, 227

**Record Number** 50872



**Libraries - Library : Library , Table**

---

**1st Floor Library**

**Tables**

Library , Table : Table Knee Clearance

**Finding**

The knee clearance height of the table is not compliant.

**On-Site Finding** 25.75 inches

**Recommendation**

Provide a compliant table.

Recommendation At least 27.00 inches

**Costing Info (Estimated)**

\$500

**Code Reference** ADA 306, 902, 226, 902.2

**Record Number** 50874





**Library**

**Break/Conference Room - Library : Break Room**

---

**1st Floor Library Study Room**

**Table**

Break Room : Tables - Knee Clearance

**Finding**

The table knee clearance does not meet required standards.

**On-Site Finding** 25.62 inches

**Recommendation**

Provide compliant tables.

Recommendation At least 27.00 inches

**Costing Info (Estimated)**

Adjust/Replace Table \$500

**Code Reference** ADA 305, 306, 902.2

**Record Number** 50900



**Reach Ranges - Library : Reach Range , Clear Floor Space Slope**

---

**Exterior Book Returns**

**Book Return - Other**

Reach Range , Clear Floor Space Slope : Clear Floor Space Slope

**Finding**

The clear floor space slope is not compliant.

**On-Site Finding** 3.40 percent

**Recommendation**

Provide compliant clear floor space.

Recommendation Up to 2.00 percent

**Costing Info (Estimated)**

Redesign space \$500

**Code Reference** ADA 304

**Record Number** 51088



**Library**

**Reach Ranges - Library : Reach Range**

---

**Exterior Book Returns**

**Book Return - Other**

Reach Range : Reach Ranges

**Finding**

This element is a protruding object.

**On-Site Finding**    None Found

**Recommendation**

Make sure that the element is not a protruding object.

Recommendation    See Recommendation

**Costing Info (Estimated)**

Unassigned

**Code Reference**    ADA 307, 304, 204

**Record Number**    51089



**Reach Ranges - Library : Reach Range**

---

**Exterior Book Returns**

**Book Return - Other**

Reach Range : Cannot be Operated with one hand

**Finding**

Element controls are non accessible.

**On-Site Finding**    None Found

**Recommendation**

Provide compliant controls for the element.

Recommendation    See Recommendation

**Costing Info (Estimated)**

\$500

**Code Reference**    ADA 302, 309, 205, 308, 410

**Record Number**    51090



**Library**

**Elevators - Lower Level : Elevator , Door**

---

**Elevator**  
**Elevator Car**

Elevator , Door : Door

**Finding**

The reopening device for the elevator door does not remain open for the required amount of time.

**On-Site Finding** Not Accessible

**Recommendation**

Contact a certified elevator provider to perform all renovation required.

Recommendation See Recommendation

**Costing Info (Estimated)**

Replace existing elevator panel \$800

**Code Reference** MA 28.6, ADA 407, 407.3.3.3

**Record Number** 50892



**Elevators - Lower Level : Elevator , Door**

---

**Elevator**  
**Elevator Car**

Elevator , Door : Space between Car and Floor

**Finding**

The space between the elevator car and the floor is not compliant.

**On-Site Finding** 1.37 inches

**Recommendation**

Decrease the width of the space between the elevator car and the floor to a compliant value.

Recommendation Up to 1.25 inches

**Costing Info (Estimated)**

Requires assembly or design \$1,840

**Code Reference** ADA 302, 407

**Record Number** 50893



## Library

### Elevators - Lower Level : Elevator

---

#### Elevator

Elevator : Evacuation Signage

##### Finding

There is no signage at the Elevator indicating the Evacuation Plan.

**On-Site Finding** None Found

##### Recommendation

Provide compliant signage indicating Evacuation plan and routes.

Recommendation See Recommendation

##### Costing Info (Estimated)

Install signage \$207

**Code Reference** ADA 302, 407

**Record Number** 50890



### Stairs - Lower Level : Stairway , Handrail

---

#### Childrens Library Stairs

##### Run 1 Left Handrail

Stairway , Handrail : Handrail Bottom Extension

##### Finding

The bottom handrail does not extend the depth of one stair tread beyond the bottom step.

**On-Site Finding** None Found

##### Recommendation

Provide a compliant handrail extension.

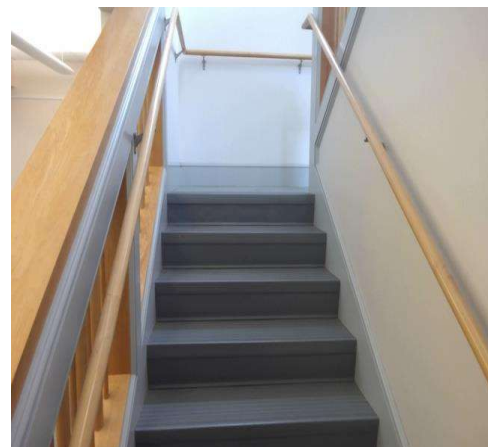
Recommendation See Recommendation

##### Costing Info (Estimated)

Add compliant extension to existing railing \$1,425

**Code Reference** ADA 504, 505.10.3, 504.6

**Record Number** 51126





**Library**

**Stairs - Lower Level : Stairway , Handrails**

---

**Childrens Library Stairs**

**Run 1 Right Handrail**

Stairway , Handrails : Handrail Distance From Wall

**Finding**

The distance between the handrail and the wall on the stairway is less than required.

**On-Site Finding** 0.87 inches

**Recommendation**

Remount the handrails on the stairway so that the distance from the handrail to the adjacent wall is compliant.

Recommendation At least 1.50 inches

**Costing Info (Estimated)**

Add compliant handrail \$1,916

**Code Reference** MA 27.4.7, ADA 504, 505.5, 504.6

**Record Number** 51127



**Stairs - Lower Level : Stairway , Handrails**

---

**Childrens Library Stairs**

**Run 2 Left Handrail**

Stairway , Handrails : No Top Handrail Extension

**Finding**

There are no top handrail extensions provided on the stairway.

**On-Site Finding** None Found

**Recommendation**

Install handrail extension to the top of the handrail that extends beyond the top riser and is parallel to the floor surface at the top landing.

Recommendation See Recommendation

**Costing Info (Estimated)**

Add compliant extension to existing railing \$1,425

**Code Reference** MA 27.4.3, ADA 504, 505.10.1, 504.6, 505.10.2

**Record Number** 51130



**Library**

**Stairs - Lower Level : Stairway , Handrails**

---

**Childrens Library Stairs**

**Run 2 Left Handrail**

Stairway , Handrails : Handrail Distance From Wall

**Finding**

The distance between the handrail and the wall on the stairway is less than required.

**On-Site Finding** 1.00 inches

**Recommendation**

Remount the handrails on the stairway so that the distance from the handrail to the adjacent wall is compliant.

Recommendation At least 1.50 inches

**Costing Info (Estimated)**

Add compliant handrail \$1,916

**Code Reference** MA 27.4.7, ADA 504, 505.5, 504.6

**Record Number** 51131



**Stairs - Lower Level : Stairway , Handrails**

---

**Childrens Library Stairs**

**Run 2 Right Handrail**

Stairway , Handrails : Handrail Extension Length

**Finding**

The top handrail extension is not the required length beyond the top riser.

**On-Site Finding** 3.50 inches

**Recommendation**

Install a compliant handrail extension to the top of the handrail that extends beyond the top riser and is parallel to the floor surface of the landing.

Recommendation At least 12.00 inches

**Costing Info (Estimated)**

Add compliant extension to existing railing \$800

**Code Reference** MA 27.4.3, ADA 504, 504.6, 505.10.2

**Record Number** 51128



## Library

### Stairs - Lower Level : Stairway , Handrail

---

#### Childrens Library Stairs

##### Run 2 Right Handrail

Stairway , Handrail : Handrail Bottom Extension

#### Finding

The bottom handrail does not extend the depth of one stair tread beyond the bottom step.

**On-Site Finding** None Found

#### Recommendation

Provide a compliant handrail extension.

Recommendation See Recommendation

#### Costing Info (Estimated)

Add compliant extension to existing railing \$1,425

**Code Reference** ADA 504, 505.10.3, 504.6

**Record Number** 51129



### Stairs - Lower Level : Stairway , Handrails

---

#### Lower Level Library Stairs

##### Run 3 Left Handrail

Stairway , Handrails : Handrail Distance From Wall

#### Finding

The distance between the handrail and the wall on the stairway is less than required.

**On-Site Finding** 1.25 inches

#### Recommendation

Remount the handrails on the stairway so that the distance from the handrail to the adjacent wall is compliant.

Recommendation At least 1.50 inches

#### Costing Info (Estimated)

Add compliant handrail \$1,916

**Code Reference** MA 27.4.7, ADA 504, 505.5, 504.6

**Record Number** 51167



## Library

### Stairs - Lower Level : Stairway , Handrail

---

#### Stairs from Lower Level Library Emergency Exit - Left

##### Run 1 Left Handrail

Stairway , Handrail : Handrail Bottom Extension

##### Finding

The bottom handrail does not extend the depth of one stair tread beyond the bottom step.

**On-Site Finding** None Found

##### Recommendation

Provide a compliant handrail extension.

Recommendation See Recommendation

##### Costing Info (Estimated)

Add compliant extension to existing railing \$1,425

**Code Reference** ADA 504, 505.10.3, 504.6

**Record Number** 51098



### Stairs - Lower Level : Stairway , Handrails

---

#### Stairs from Lower Level Library Emergency Exit - Left

##### Run 1 Left Handrail

Stairway , Handrails : Handrail Height

##### Finding

The handrails are not mounted at the required height.

**On-Site Finding** 33.00 inches

##### Recommendation

Provide handrails on the stairway at the required height.

Recommendation 34.00 - 38.00 inches

##### Costing Info (Estimated)

Add compliant handrail \$1,528

**Code Reference** MA 27.4.2, ADA 504, 504.6, 505.4

**Record Number** 51099



## Library

### Stairs - Lower Level : Stairway , Handrails

---

#### Stairs from Lower Level Library Emergency Exit - Left

##### Run 1 Right Handrail

Stairway , Handrails : No Top Handrail Extension

##### Finding

There are no top handrail extensions provided on the stairway.

**On-Site Finding** None Found

##### Recommendation

Install handrail extension to the top of the handrail that extends beyond the top riser and is parallel to the floor surface at the top landing.

Recommendation See Recommendation

##### Costing Info (Estimated)

Add compliant extension to existing railing \$1,425

**Code Reference** MA 27.4.3, ADA 504, 505.10.1, 504.6, 505.10.2

**Record Number** 51095



### Stairs - Lower Level : Stairway , Handrail

---

#### Stairs from Lower Level Library Emergency Exit - Left

##### Run 1 Right Handrail

Stairway , Handrail : Handrail Bottom Extension

##### Finding

The bottom handrail does not extend the depth of one stair tread beyond the bottom step.

**On-Site Finding** None Found

##### Recommendation

Provide a compliant handrail extension.

Recommendation See Recommendation

##### Costing Info (Estimated)

Add compliant extension to existing railing \$1,425

**Code Reference** ADA 504, 505.10.3, 504.6

**Record Number** 51096





**Library**

**Stairs - Lower Level : Stairway , Handrails**

---

**Stairs from Lower Level Library Emergency Exit - Left**  
**Run 1 Right Handrail**

Stairway , Handrails : Handrail Height

**Finding**

The handrails are not mounted at the required height.

**On-Site Finding** 33.00 inches

**Recommendation**

Provide handrails on the stairway at the required height.

Recommendation 34.00 - 38.00 inches

**Costing Info (Estimated)**

Add compliant handrail \$1,528

**Code Reference** MA 27.4.2, ADA 504, 504.6, 505.4

**Record Number** 51097



**Stairs - Lower Level : Stairway , Handrails**

---

**Stairs from Lower Level Library Emergency Exit - Left**  
**Run 2 Left Handrail**

Stairway , Handrails : Handrail Extension

**Finding**

The ends of the handrails are not rounded or returned smoothly to the wall or post.

**On-Site Finding** None Found

**Recommendation**

Install handrail extensions that are rounded or returned smoothly to the wall post.

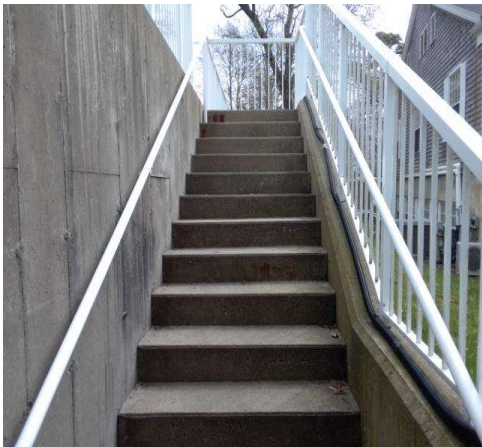
Recommendation See Recommendation

**Costing Info (Estimated)**

Add compliant handrail \$1,916

**Code Reference** MA 27.4.8, ADA 504, 504.6, 505.10

**Record Number** 51100



**Library**

**Stairs - Lower Level : Stairway , Handrails**

---

**Stairs from Lower Level Library Emergency Exit - Left**  
**Run 2 Left Handrail**

Stairway , Handrails : Handrail Height

**Finding**

The handrails are not mounted at the required height.

**On-Site Finding** 32.50 inches

**Recommendation**

Provide handrails on the stairway at the required height.

Recommendation 34.00 - 38.00 inches

**Costing Info (Estimated)**

Add compliant handrail \$1,528

**Code Reference** MA 27.4.2, ADA 504, 504.6, 505.4

**Record Number** 51101



**Stairs - Lower Level : Stairway , Handrails**

---

**Stairs from Lower Level Library Emergency Exit - Left**  
**Run 2 Right Handrail**

Stairway , Handrails : Handrail Extension

**Finding**

The ends of the handrails are not rounded or returned smoothly to the wall or post.

**On-Site Finding** None Found

**Recommendation**

Install handrail extensions that are rounded or returned smoothly to the wall post.

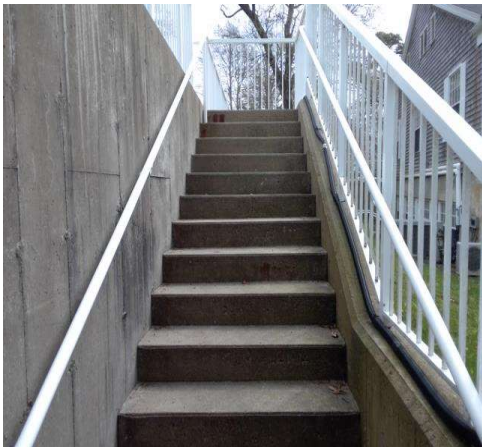
Recommendation See Recommendation

**Costing Info (Estimated)**

Add compliant handrail \$1,916

**Code Reference** MA 27.4.8, ADA 504, 504.6, 505.10

**Record Number** 51102



**Library**

**Stairs - Lower Level : Stairway , Handrails**

**Stairs from Lower Level Library Emergency Exit - Left  
Run 2 Right Handrail**

Stairway , Handrails : Handrail Extension Length

**Finding**

The top handrail extension is not the required length beyond the top riser.

**On-Site Finding** 11.00 inches

**Recommendation**

Install a compliant handrail extension to the top of the handrail that extends beyond the top riser and is parallel to the floor surface of the landing.

**Recommendation** At least 12.00 inches

**Costing Info (Estimated)**

Add compliant extension to existing railing \$800

**Code Reference** MA 27.4.3, ADA 504, 504.6, 505.10.2

**Record Number** 51103



**Library**

**Stairs - Lower Level : Stairway , Handrails**

**Stairs from Lower Level Library Emergency Exit - Left  
Run 2 Right Handrail**

Stairway , Handrails : Handrail Extension not Parallel

**Finding**

The top handrail extension of the stairway is not parallel with the floor surface at the top landing.

**On-Site Finding**    Not Parallel

**Recommendation**

Install a compliant handrail extension to the top of the handrail that extends beyond the top riser and is parallel to the floor surface of the landing.

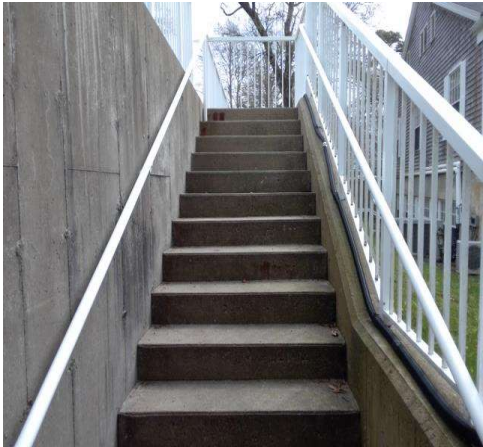
Recommendation        See Recommendation

**Costing Info (Estimated)**

Add compliant extension to existing        \$800  
railing

**Code Reference**        MA 27.4.3,    ADA 504, 504.6,  
505.10.2

**Record Number**        51104



## Library

### Stairs - Lower Level : Stairway , Handrail

---

#### Stairs from Lower Level Library Emergency Exit - Left Run 2 Right Handrail

Stairway , Handrail : Handrail Bottom Extension

##### Finding

The bottom handrail does not extend the depth of one stair tread beyond the bottom step.

**On-Site Finding** None Found

##### Recommendation

Provide a compliant handrail extension.

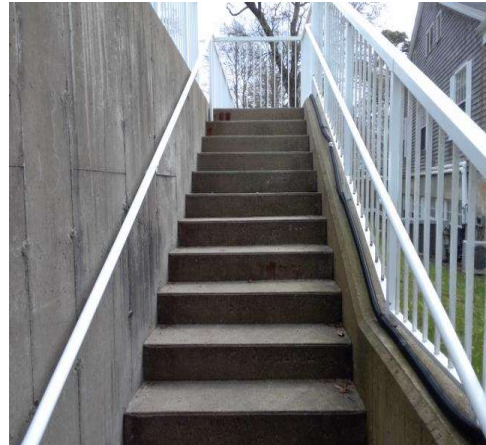
Recommendation See Recommendation

##### Costing Info (Estimated)

Add compliant extension to existing railing \$1,425

**Code Reference** ADA 504, 505.10.3, 504.6

**Record Number** 51105



### Stairs - Lower Level : Stairway , Handrail

---

#### Stairs from Lower Level Library Emergency Exit - Right Run 1 Left Handrail

Stairway , Handrail : Handrail Bottom Extension

##### Finding

The bottom handrail does not extend the depth of one stair tread beyond the bottom step.

**On-Site Finding** None Found

##### Recommendation

Provide a compliant handrail extension.

Recommendation See Recommendation

##### Costing Info (Estimated)

Add compliant extension to existing railing \$1,425

**Code Reference** ADA 504, 505.10.3, 504.6

**Record Number** 51117





## Library

### Stairs - Lower Level : Stairway , Handrail

---

#### Stairs from Lower Level Library Emergency Exit - Right

##### Run 1 Right Handrail

Stairway , Handrail : Handrail Bottom Extension

##### Finding

The bottom handrail does not extend the depth of one stair tread beyond the bottom step.

**On-Site Finding** None Found

##### Recommendation

Provide a compliant handrail extension.

Recommendation See Recommendation

##### Costing Info (Estimated)

Add compliant extension to existing railing \$1,425

**Code Reference** ADA 504, 505.10.3, 504.6

**Record Number** 51115



### Stairs - Lower Level : Stairway , Handrails

---

#### Stairs from Lower Level Library Emergency Exit - Right

##### Run 1 Right Handrail

Stairway , Handrails : Handrail Height

##### Finding

The handrails are not mounted at the required height.

**On-Site Finding** 39.75 inches

##### Recommendation

Provide handrails on the stairway at the required height.

Recommendation 34.00 - 38.00 inches

##### Costing Info (Estimated)

Add compliant handrail \$1,528

**Code Reference** MA 27.4.2, ADA 504, 504.6, 505.4

**Record Number** 51116



## Library

### Stairs - Lower Level : Stairway , Handrail

---

#### Stairs from Lower Level Library Emergency Exit - Right

##### Run 2 Left Handrail

Stairway , Handrail : Handrail Bottom Extension

##### Finding

The bottom handrail does not extend the depth of one stair tread beyond the bottom step.

**On-Site Finding** None Found

##### Recommendation

Provide a compliant handrail extension.

Recommendation See Recommendation

##### Costing Info (Estimated)

Add compliant extension to existing railing \$1,425

**Code Reference** ADA 504, 505.10.3, 504.6

**Record Number** 51118



### Stairs - Lower Level : Stairway , Handrails

---

#### Stairs from Lower Level Library Emergency Exit - Right

##### Run 2 Right Handrail

Stairway , Handrails : Handrail Extension

##### Finding

The ends of the handrails are not rounded or returned smoothly to the wall or post.

**On-Site Finding** None Found

##### Recommendation

Install handrail extensions that are rounded or returned smoothly to the wall post.

Recommendation See Recommendation

##### Costing Info (Estimated)

Add compliant handrail \$1,916

**Code Reference** MA 27.4.8, ADA 504, 504.6, 505.10

**Record Number** 51119



**Library**

**Stairs - Lower Level : Stairway , Handrails**

---

**Stairs from Lower Level Library Emergency Exit - Right**  
**Run 2 Right Handrail**

Stairway , Handrails : Handrail Extension Length

**Finding**

The top handrail extension is not the required length beyond the top riser.

**On-Site Finding** 11.50 inches

**Recommendation**

Install a compliant handrail extension to the top of the handrail that extends beyond the top riser and is parallel to the floor surface of the landing.

**Recommendation** At least 12.00 inches

**Costing Info (Estimated)**

Add compliant extension to existing railing \$800

**Code Reference** MA 27.4.3, ADA 504, 504.6, 505.10.2

**Record Number** 51120



**Stairs - Lower Level : Stairway , Handrail**

---

**Stairs from Lower Level Library Emergency Exit - Right**  
**Run 2 Right Handrail**

Stairway , Handrail : Handrail Bottom Extension

**Finding**

The bottom handrail does not extend the depth of one stair tread beyond the bottom step.

**On-Site Finding** None Found

**Recommendation**

Provide a compliant handrail extension.

**Recommendation** See Recommendation

**Costing Info (Estimated)**

Add compliant extension to existing railing \$1,425

**Code Reference** ADA 504, 505.10.3, 504.6

**Record Number** 51121





**Library**

**Stairs - Lower Level : Stairway , Risers**

---

**Stairs from Lower Level Library Emergency Exit - Right**  
**Run 3**

Stairway , Risers : Risers Height

**Finding**

The height of the risers are not uniform.

**On-Site Finding** Not Uniform

**Recommendation**

Modify or replace the stairs to provide uniform riser height.

Recommendation See Recommendation

**Costing Info (Estimated)**

Install stairway \$8,520

**Code Reference** MA 27.2, ADA 504

**Record Number** 51110



**Stairs - Lower Level : Stairway , Handrails**

---

**Stairs from Lower Level Library Emergency Exit - Right**  
**Run 3 Left Handrail**

Stairway , Handrails : Handrail Extension

**Finding**

The ends of the handrails are not rounded or returned smoothly to the wall or post.

**On-Site Finding** None Found

**Recommendation**

Install handrail extensions that are rounded or returned smoothly to the wall post.

Recommendation See Recommendation

**Costing Info (Estimated)**

Add compliant handrail \$1,916

**Code Reference** MA 27.4.8, ADA 504, 504.6, 505.10

**Record Number** 51111



## Library

### Stairs - Lower Level : Stairway , Handrails

---

#### Stairs from Lower Level Library Emergency Exit - Right

##### Run 3 Left Handrail

Stairway , Handrails : Handrail Extension not Parallel

##### Finding

The top handrail extension of the stairway is not parallel with the floor surface at the top landing.

**On-Site Finding** Not Parallel

##### Recommendation

Install a compliant handrail extension to the top of the handrail that extends beyond the top riser and is parallel to the floor surface of the landing.

Recommendation See Recommendation

##### Costing Info (Estimated)

Add compliant extension to existing railing \$800

**Code Reference** MA 27.4.3, ADA 504, 504.6, 505.10.2

**Record Number** 51112



### Stairs - Lower Level : Stairway , Handrail

---

#### Stairs from Lower Level Library Emergency Exit - Right

##### Run 3 Left Handrail

Stairway , Handrail : Handrail Bottom Extension

##### Finding

The bottom handrail does not extend the depth of one stair tread beyond the bottom step.

**On-Site Finding** None Found

##### Recommendation

Provide a compliant handrail extension.

Recommendation See Recommendation

##### Costing Info (Estimated)

Add compliant extension to existing railing \$1,425

**Code Reference** ADA 504, 505.10.3, 504.6

**Record Number** 51113





**Library**

**Stairs - Lower Level : Stairway , Handrails**

---

**Stairs from Lower Level Library Emergency Exit - Right**  
**Run 3 Left Handrail**

Stairway , Handrails : Handrail Height

**Finding**

The handrails are not mounted at the required height.

**On-Site Finding** 30.25 inches

**Recommendation**

Provide handrails on the stairway at the required height.

Recommendation 34.00 - 38.00 inches

**Costing Info (Estimated)**

Add compliant handrail \$1,528

**Code Reference** MA 27.4.2, ADA 504, 504.6, 505.4

**Record Number** 51114



**Stairs - Lower Level : Stairway , Handrails**

---

**Stairs from Lower Level Library Emergency Exit - Right**  
**Run 3 Right Handrail**

Stairway , Handrails : Handrail Extension

**Finding**

The ends of the handrails are not rounded or returned smoothly to the wall or post.

**On-Site Finding** None Found

**Recommendation**

Install handrail extensions that are rounded or returned smoothly to the wall post.

Recommendation See Recommendation

**Costing Info (Estimated)**

Add compliant handrail \$1,916

**Code Reference** MA 27.4.8, ADA 504, 504.6, 505.10

**Record Number** 52348



## Library

### Stairs - Lower Level : Stairway , Handrail

---

#### Stairs from Lower Level Library Emergency Exit - Right

##### Run 3 Right Handrail

Stairway , Handrail : Handrail Bottom Extension

##### Finding

The bottom handrail does not extend the depth of one stair tread beyond the bottom step.

**On-Site Finding** None Found

##### Recommendation

Provide a compliant handrail extension.

Recommendation See Recommendation

##### Costing Info (Estimated)

Add compliant extension to existing railing \$1,425

**Code Reference** ADA 504, 505.10.3, 504.6

**Record Number** 52349



### Doors - Lower Level : Door , Hardware

---

#### Lower Level Program Area

##### Lever

Door , Hardware : Door Lock

##### Finding

The door lock requires tight grasping, pinching, or twisting of the wrist to operate.

**On-Site Finding** Not Accessible

##### Recommendation

Provide a compliant door lock for the door that does not require tight grasping, pinching, or twisting of the wrist to operate.

Recommendation See Recommendation

##### Costing Info (Estimated)

Provide door lock \$310

**Code Reference** ADA 404.2.7, 309.4

**Record Number** 50922



## Library

### Doors - Lower Level : Door , Hardware

---

#### Lower Level Program Area in Staff Area Breakroom

##### Lever

Door , Hardware : Door Lock

##### Finding

The door lock requires tight grasping, pinching, or twisting of the wrist to operate.

**On-Site Finding** Not Accessible

##### Recommendation

Provide a compliant door lock for the door that does not require tight grasping, pinching, or twisting of the wrist to operate.

Recommendation See Recommendation

##### Costing Info (Estimated)

Provide door lock \$310

**Code Reference** ADA 404.2.7, 309.4

**Record Number** 51071



### Doors - Lower Level : Door , Hardware

---

#### Lower Level Staff Area Breakroom

##### Lever

Door , Hardware : Door Lock

##### Finding

The door lock requires tight grasping, pinching, or twisting of the wrist to operate.

**On-Site Finding** Not Accessible

##### Recommendation

Provide a compliant door lock for the door that does not require tight grasping, pinching, or twisting of the wrist to operate.

Recommendation See Recommendation

##### Costing Info (Estimated)

Provide door lock \$310

**Code Reference** ADA 404.2.7, 309.4

**Record Number** 51171



## Library

### Doors - Lower Level : Door , Hardware

---

#### Lower Level Staff Area Breakroom Unisex Restroom Lever

Door , Hardware : Door Opening Pressure

##### Finding

The door opening force for this door is greater than allowed.

**On-Site Finding** 6.00 pounds

##### Recommendation

Adjust the closer on the door to meet the door opening force requirements.

Recommendation Up to 5.00 pounds

##### Costing Info (Estimated)

Adjust door closer pressure \$25

**Code Reference** MA 26.8, ADA 404, 404.2.9

**Record Number** 51137



### Doors - Lower Level : Door , Hardware

---

#### Lower Level Staff Area Breakroom Unisex Restroom Lever

Door , Hardware : Door Lock

##### Finding

The door lock requires tight grasping, pinching, or twisting of the wrist to operate.

**On-Site Finding** Not Accessible

##### Recommendation

Provide a compliant door lock for the door that does not require tight grasping, pinching, or twisting of the wrist to operate.

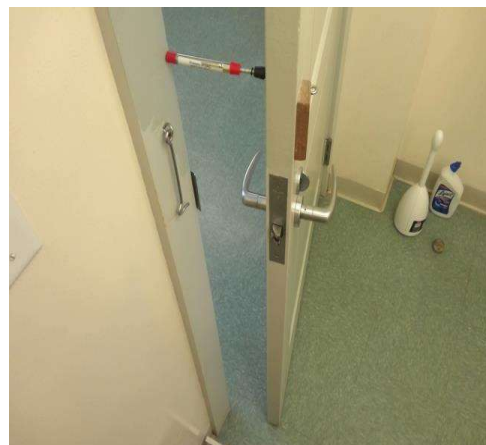
Recommendation See Recommendation

##### Costing Info (Estimated)

Provide door lock \$310

**Code Reference** ADA 404.2.7, 309.4

**Record Number** 51138



## Library

### Doors - Lower Level : Door , Clear Floor Space

---

#### Lower Level Staff Area Breakroom Unisex Restroom

##### Pull Side

Door , Clear Floor Space : Front Approach Clear Floor Space Length

##### Finding

There is not enough clear floor space provided at the pull side of the door.

**On-Site Finding** 45.00 inches

##### Recommendation

Provide the recommended clear floor space on the pull side of the door.

Recommendation At least 60.00 inches

##### Costing Info (Estimated)

Install automatic door opener \$2,921

**Code Reference** MA 26.6, ADA 404, 404.2.4

Notes : Toilet Obstructs Clear Floor Space Length.

**Record Number** 51140



### Doors - Lower Level : Door , Hardware

---

#### Lower Level Staff Area Offices

##### Lever

Door , Hardware : Door Lock

##### Finding

The door lock requires tight grasping, pinching, or twisting of the wrist to operate.

**On-Site Finding** Not Accessible

##### Recommendation

Provide a compliant door lock for the door that does not require tight grasping, pinching, or twisting of the wrist to operate.

Recommendation See Recommendation

##### Costing Info (Estimated)

Provide door lock \$310

**Code Reference** ADA 404.2.7, 309.4

**Record Number** 50930





## Library

### Doors - Lower Level : Door , Latch Side Clearance

---

#### Lower Level Staff Area Offices

##### Pull Side

Door , Latch Side Clearance : Front Approach  
Latch Side Clearance

##### Finding

There is less than the required latch side clearance on the pull side of the door.

**On-Site Finding** 6.00 inches

##### Recommendation

Provide required latch side clearance on the pull side of the door.

Recommendation At least 18.00 inches

##### Costing Info (Estimated)

Install automatic door opener \$4,000

**Code Reference** MA 26.6, ADA 404, 404.2.4

Notes : Pillar Obstructs Latch Side Clearance.

**Record Number** 50931



### Doors - Lower Level : Door , Hardware

---

#### Lower Level Study Room

##### Lever

Door , Hardware : Door Lock

##### Finding

The door lock requires tight grasping, pinching, or twisting of the wrist to operate.

**On-Site Finding** Not Accessible

##### Recommendation

Provide a compliant door lock for the door that does not require tight grasping, pinching, or twisting of the wrist to operate.

Recommendation See Recommendation

##### Costing Info (Estimated)

Provide door lock \$310

**Code Reference** ADA 404.2.7, 309.4

**Record Number** 50914



## Library

### Doors - Lower Level : Door , Latch Side Clearance

---

#### Lower Level Study Room

##### Pull Side

Door , Latch Side Clearance : Front Approach  
Latch Side Clearance

##### Finding

There is less than the required latch side clearance on the pull side of the door.

**On-Site Finding** 15.00 inches

##### Recommendation

Provide required latch side clearance on the pull side of the door.

Recommendation At least 18.00 inches

##### Costing Info (Estimated)

Install automatic door opener \$4,000

**Code Reference** MA 26.6, ADA 404, 404.2.4

Notes : Table Obstructs Latch Side Clearance.

**Record Number** 50915



### Signage - Lower Level : Signage

---

#### Lower Level Library Emergency Exit

Signage : Highest Tactile Character Height

##### Finding

Highest line of tactile characters are not at a compliant height.

**On-Site Finding** 61.50 inches

##### Recommendation

Provide compliant signage at the location.

Recommendation Up to 60.00 inches

##### Costing Info (Estimated)

\$158

**Code Reference** ADA 703.4.1

Notes : Unable to Gain Access at Time of Inspection.

**Record Number** 50923



Library

Signage - Lower Level : Signage

---

Lower Level Program Area

Signage : No Room Identification

Finding

There is no room identification signage.

On-Site Finding   None Found

Recommendation

Install room identification signage.

Recommendation       See Recommendation

Costing Info (Estimated)

Install signage                               \$158

Code Reference    MA 41.1,   ADA 703, 216, 216.2

Record Number       50876



Signage - Lower Level : Signage

---

Lower Level Program Area in Staff Area Breakroom

Signage : No Room Identification

Finding

There is no room identification signage.

On-Site Finding   None Found

Recommendation

Install room identification signage.

Recommendation       See Recommendation

Costing Info (Estimated)

Install signage                               \$158

Code Reference    MA 41.1,   ADA 703, 216, 216.2

Record Number       51150









## Library

### Restrooms - Lower Level : Restroom , Toilet

---

#### Lower Level Staff Area Breakroom Unisex Restroom

Restroom , Toilet : Toilet Clear Floor Space

##### Finding

There is less than the required minimum space in front of the toilet.

**On-Site Finding** 34.00 inches

##### Recommendation

Create the required minimum clear space in front of the toilet.

Recommendation At least 42.00 inches

##### Costing Info (Estimated)

Modify space \$3,500

**Code Reference** MA 30.6.1, MA 30.7.1, ADA 603

**Record Number** 51159



### Restrooms - Lower Level : Restroom , Grab Bars

---

#### Lower Level Staff Area Breakroom Unisex Restroom

Restroom , Grab Bars : Distance from Back Wall to Front of Grab Bar

##### Finding

The distance from the back wall to the front of the grab bar is less than required.

**On-Site Finding** 47.75 inches

##### Recommendation

Install or move the grab bar to create the required distance from the back wall to the front of the grab bar.

Recommendation At least 54.00 inches

##### Costing Info (Estimated)

Provide compliant grab bar \$267

**Code Reference** MA 30.8, ADA 603, 609, 604.5.1

**Record Number** 51160



## Library

### Restrooms - Lower Level : Restroom , Grab Bars

---

#### Lower Level Staff Area Breakroom Unisex Restroom

Restroom , Grab Bars : Side Grab Bar Height

##### Finding

The height of the side grab bar is not at the correct height.

**On-Site Finding** 37.00 inches

##### Recommendation

Remount the grab bar so it is at the correct height.

Recommendation 33.00 - 36.00 inches

##### Costing Info (Estimated)

Relocate compliant grab bars and patch \$500

**Code Reference** MA 30.8.2, ADA 603, 609, 609.4

**Record Number** 51161



### Restrooms - Lower Level : Restroom , Grab Bars

---

#### Lower Level Staff Area Breakroom Unisex Restroom

Restroom , Grab Bars : Rear Grab Bar Height

##### Finding

The grab bar on the rear wall is not at the correct height.

**On-Site Finding** 37.00 inches

##### Recommendation

Remount the rear grab bar in the compartment designated to be accessible so the height of the gripping surface is at the correct height.

Recommendation 33.00 - 36.00 inches

##### Costing Info (Estimated)

Provide compliant grab bars \$231

**Code Reference** MA 30.8.1, ADA 603, 609, 609.4

**Record Number** 51162



## Library

### Restrooms - Lower Level : Restroom , Toilet Compartment

---

#### Lower Level Staff Area Breakroom Unisex Restroom

Restroom , Toilet Compartment : Coat Hook Height

##### Finding

The coat hook is not mounted at the correct height.

**On-Site Finding** 63.50 inches

##### Recommendation

Mount the coat hook at the recommended height.

Recommendation 15.00 - 48.00 inches

##### Costing Info (Estimated)

Move coat hook \$50

**Code Reference** MA 30.6.1, MA 30.6.2, ADA 308, 603.4, 308.1

**Record Number** 51163



### Restrooms - Lower Level : Restroom , Toilet Compartment

---

#### Lower Level Staff Area Breakroom Unisex Restroom

Restroom , Toilet Compartment : Toilet Paper Dispenser Distance From Seat

##### Finding

The location of the toilet paper dispenser is not within the required distance from the front edge of the toilet seat.

**On-Site Finding** 14.00 inches

##### Recommendation

Remount the toilet paper dispenser so it is within the required distance from the front edge of the toilet seat. Toilet paper dispensers must allow continuous paper flow and shall not interfere with the use of the side grab bar.

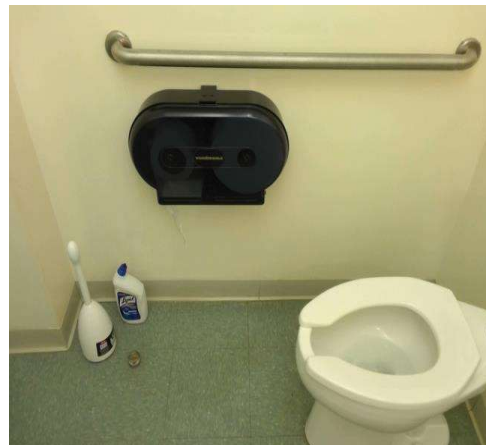
Recommendation 7.00 - 9.00 inches

##### Costing Info (Estimated)

Provide compliant dispenser \$277

**Code Reference** MA 30.7.6, ADA 603, 604.7

**Record Number** 51164



## Library

### Restrooms - Lower Level : Restroom , Lavatory

---

#### Lower Level Staff Area Breakroom Unisex Restroom Lavatory

Restroom , Lavatory : Lavatory Surface Height

##### Finding

The height of the counter surface is greater than allowed.

**On-Site Finding** 34.37 inches

##### Recommendation

Relocate or replace the lavatory to provide a maximum counter surface height of no greater than recommended.

Recommendation Up to 34.00 inches

##### Costing Info (Estimated)

Provide compliant lavatory \$1,286

**Code Reference** MA 30.9.2, ADA 213, 606, 606.3

**Record Number** 51175



### Restrooms - Lower Level : Restroom , Lavatory

---

#### Lower Level Staff Area Breakroom Unisex Restroom Lavatory

Restroom , Lavatory : Lavatory - Supply Lines not wrapped

##### Finding

Supply lines are not wrapped at the lavatory.

**On-Site Finding** Not Wrapped

##### Recommendation

Wrap the supply lines around lavatory according to compliance.

Recommendation See Recommendation

##### Costing Info (Estimated)

Wrap supply lines \$149

**Code Reference** MA 30.9.5, ADA 213, 606, 606.5

**Record Number** 51176



## Library

### Restrooms - Lower Level : Restroom , Mirror

---

#### Lower Level Staff Area Breakroom Unisex Restroom

Restroom , Mirror : Mirror Bottom Edge Height

##### Finding

The bottom edge of the reflective surface of the mirror is not at the correct height.

**On-Site Finding** 41.00 inches

##### Recommendation

Lower the mirror so the bottom edge of the reflective surface is no higher than recommended above the finished floor.

Recommendation Up to 40.00 inches

##### Costing Info (Estimated)

Lower mirror \$300

**Code Reference** MA 30.11, ADA 603, 213, 603.3

**Record Number** 51177



### Restrooms - Lower Level : Restroom , Wall Signage

---

#### Lower Level Staff Area Breakroom Unisex Restroom

##### Wall Sign

Restroom , Wall Signage : No Wall Signage

##### Finding

There is no signage indicating accessibility on the latch side of the entry door of the restroom.

**On-Site Finding** None Found

##### Recommendation

Provide compliant signage on latch side of door.

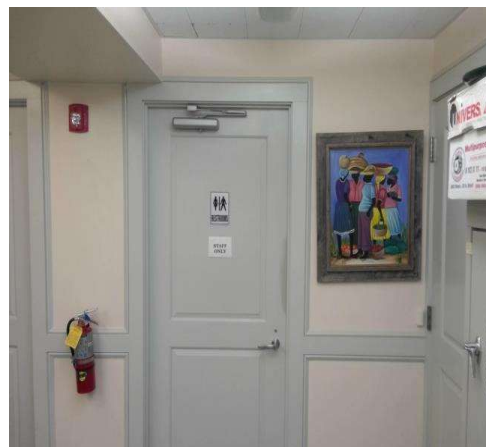
Recommendation See Recommendation

##### Costing Info (Estimated)

Install signage \$158

**Code Reference** MA 41.1, ADA 703, 216, 216.8

**Record Number** 51178





**Library**

**Restrooms - Lower Level : Restroom**

---

**Lower Level Staff Area Breakroom Unisex Restroom**

Restroom : No Door Privacy Lock and Occupied Indicator

**Finding**

The restroom door does not provide a compliant privacy lock with occupancy indicator.

**On-Site Finding** None Found

**Recommendation**

Install a compliant privacy lock with occupancy indicator to the door.

Recommendation See Recommendation

**Costing Info (Estimated)**

Replace existing lock set with lever handled lock set \$804

**Code Reference** ADA 213, 213.2.1

**Record Number** 51172



**Restrooms - Lower Level : Restroom**

---

**Lower Level Staff Area Breakroom Unisex Restroom**

Restroom : Circular Turning Space Diameter

**Finding**

There is not sufficient clear floor space in the restroom to accommodate an individual in a wheelchair.

**On-Site Finding** 47.00 inches

**Recommendation**

Modify the restroom to provide sufficient clear floor space for a turning radius in the restroom to accommodate an individual in a wheelchair.

Recommendation At least 60.00 inches

**Costing Info (Estimated)**

Install single-use toilet room \$14,000

**Code Reference** ADA 603, 304, 304.3.1, 603.2.1, 304.3

**Record Number** 51173



Library

Restrooms - Lower Level : Restroom

Lower Level Staff Area Breakroom Unisex Restroom

Restroom : Distance from Door Edge to Nearest Fixture

Finding

The entrance door swings into the turning space within the restroom.

On-Site Finding 30.00 inches

Recommendation

Reverse the door swing, or modify the restroom to provide sufficient clear floor space for a turning radius in the restroom to accommodate an individual in a wheelchair.

Recommendation At least 48.00 inches

Costing Info (Estimated)

Provide clear floor space \$8,200

Code Reference ADA 304, 603.2, 305.3, 603.2.3

Record Number 51174



Libraries - Lower Level : Library , Computer Station

Lower Level Library

Card Catalog

Library , Computer Station : Computer Station Table Top Height

Finding

The height of the top of the table is not compliant.

On-Site Finding 39.00 inches

Recommendation

Provide a compliant computer workstation.

Recommendation 28.00 - 34.00 inches

Costing Info (Estimated)

\$500

Code Reference MA 12.2.2, ADA 403, 902, 221, 225, 902.3

Record Number 50920



**Library**

**Libraries - Lower Level : Library , Aisles**

---

**Lower Level Library**

**Main**

Library , Aisles : Aisle Width between Shelves

**Finding**

The space between book shelves is less than required value.

**On-Site Finding** 38.00 inches

**Recommendation**

Increase the space between shelves to the recommended value.

Recommendation At least 42.00 inches

**Costing Info (Estimated)**

Provide compliant shelves \$2,160

**Code Reference** ADA 403

**Record Number** 50916



**Libraries - Lower Level : Library , Checkout Counter**

---

**Lower Level Library**

**Reference**

Library , Checkout Counter : Check Out Counter Height

**Finding**

The height of the checkout counter is greater than required.

**On-Site Finding** 37.75 inches

**Recommendation**

Provide a checkout counter at the required height.

Recommendation 28.00 - 34.00 inches

**Costing Info (Estimated)**

Provide compliant counter \$545

**Code Reference** MA 12.2.3, ADA 904, 227

**Record Number** 50919



**Library**

**Libraries - Lower Level : Library , Table**

---

**Lower Level Library  
Tables**

Library , Table : Table Knee Clearance

**Finding**

The knee clearance height of the table is not compliant.

**On-Site Finding** 25.37 inches

**Recommendation**

Provide a compliant table.

Recommendation At least 27.00 inches

**Costing Info (Estimated)**

\$500

**Code Reference** ADA 306, 902, 226, 902.2

**Record Number** 50921



**Assembly Areas - Lower Level : Assembly Area**

---

**Lower Level Program Area**

Assembly Area : Less Than Minimum Required Accessible Seats

**Finding**

There are not enough accessible seats at the location with respect to the total number of seats available.

**On-Site Finding** None Found

**Recommendation**

Provide compliant accessible seating at the location.

Recommendation At least 2.00 seats

**Costing Info (Estimated)**

Requires re-design \$600

**Code Reference** ADA 221.2, 802.1

**Record Number** 50875



**Library**

**Break/Conference Room - Lower Level : Break Room , Appliance**

---

**Lower Level Staff Area Breakroom**

**Microwave - Appliance**

Break Room , Appliance : Reach Height

**Finding**

Appliance Reach Height in the break/conference room is not compliant.

**On-Site Finding** 50.00 inches

**Recommendation**

Make sure that the specified appliance reach height is compliant.

Recommendation Up to 48.00 inches

**Costing Info (Estimated)**

Adjust appliance height \$1,200

**Code Reference** ADA 309, 205, 308

**Record Number** 51079



**Break/Conference Room - Lower Level : Break Room**

---

**Lower Level Staff Area Breakroom**

**Sink**

Break Room : Sink - Counter Height

**Finding**

Sink counter height does not meet the standards.

**On-Site Finding** 36.00 inches

**Recommendation**

Provide compliant sink.

Recommendation Up to 34.00 inches

**Costing Info (Estimated)**

Provide compliant sink \$1,800

**Code Reference** ADA 606.3

**Record Number** 51075





**Library**

**Break/Conference Room - Lower Level : Break Room**

---

**Lower Level Staff Area Breakroom**

**Sink**

Break Room : Pipes not Wrapped

**Finding**

The pipes are not wrapped for the sink.

**On-Site Finding** Not Wrapped

**Recommendation**

Insulate or otherwise configure the water supply and drain pipes under the sink to protect against contact. Make certain there are no sharp or abrasive surfaces under the sink.

Recommendation See Recommendation

**Costing Info (Estimated)**

Wrap pipes \$149

**Code Reference** ADA 606.5

**Record Number** 51076



**Break/Conference Room - Lower Level : Break Room**

---

**Lower Level Staff Area Breakroom**

**Sink**

Break Room : Toe Kick Not Removed

**Finding**

The toe kick for the sink in break/conference room is not removed.

**On-Site Finding** Not Removed

**Recommendation**

Remove the toe kick for the sink.

Recommendation See Recommendation

**Costing Info (Estimated)**

\$612

**Code Reference** ADA 305, 306, 606.2

**Record Number** 51077



**Library**

**Break/Conference Room - Lower Level : Break Room , Sink**

---

**Lower Level Staff Area Breakroom Sink**

Break Room , Sink : Supply Lines

**Finding**

Supply lines are not wrapped for the break/conference room sink.

**On-Site Finding** Not Wrapped

**Recommendation**

Make sure that the supply lines are fully wrapped and insulated for the sink.

Recommendation See Recommendation

**Costing Info (Estimated)**

Wrap pipes \$149

**Code Reference** ADA 606.5

**Record Number** 51078



**Break/Conference Room - Lower Level : Break Room**

---

**Lower Level Staff Area Breakroom Table**

Break Room : Tables - Knee Clearance

**Finding**

The table knee clearance does not meet required standards.

**On-Site Finding** 25.75 inches

**Recommendation**

Provide compliant tables.

Recommendation At least 27.00 inches

**Costing Info (Estimated)**

Adjust/Replace Table \$500

**Code Reference** ADA 305, 306, 902.2

Notes : Table is Not Accessible By Design.

**Record Number** 51073



**Library**

**Break/Conference Room - Lower Level : Break Room**

---

**Lower Level Staff Area Breakroom  
Table**

Break Room : Tables - Knee Depth

**Finding**

The table knee depth does not meet required standards.

**On-Site Finding** 8.00 inches

**Recommendation**

Provide compliant tables.

Recommendation At least 19.00 inches

**Costing Info (Estimated)**

Provide compliant seating \$2,174

**Code Reference** ADA 309, 205, 308, 228, 306.3.3

Notes : Table is Not Accessible By Design.

**Record Number** 51074



**Lockers - Lower Level : Lockers**

---

**Lower Level Staff Area Breakroom**

Lockers : No Accessible Lockers Available

**Finding**

No accessible lockers were found.

**On-Site Finding** Not Available

**Recommendation**

At least one locker or 5% of the lockers should be accessible.

Recommendation See Recommendation

**Costing Info (Estimated)**

Requires assembly or design \$1,840

**Code Reference** ADA 225.2.1, 811

**Record Number** 51156



## Library



## Library

200 Main Street  
Vineyard Haven, MA 02568

Date of Inspection

4/30/2019

\*Estimated Facility Total: \$209,407

\*Estimated facility total is for estimating purposes only and does not represent total construction, repair totals or design fees.

Prepared Using

